

CT20 AND CT40 SELF CONTAINED HYDRAULIC CUTTER **INSTRUCTIONS**

INTRODUCTION

The CT20 and CT40 self-contained hydraulic cutters offer cutting capacities of up to 25mm steel wire rope and 40mm cable. These versatile cutters are suitable for cutting wire rope, round bar, wire strands and electrical cable.

SAFETY NOTES

WARNING: All Hi-Force cutters require a certain maximum handle force to produce the designed cutting force. **NEVER** use extensions or levers to exert more force than the maximum capacity detailed in your Hi-Force catalogue. Always wear suitable personal protection when operating hydraulic equipment.

DANGER: Keep all body parts away from cutter and work piece during operation.

IMPORTANT: Ensure that the correct size tool is selected for the job.

IMPORTANT: Minimum age of operator must be 18 years. The operator must have read and understood all instructions, safety issues, cautions and warnings before starting to operate this equipment.

WARNING: Risk of finger trapping. Only hold the tool by means of the handle.

WARNING: Do not overload equipment. Overloading causes equipment failure and possible personal injury.

CAUTION: Make sure that all system components are protected from external sources of damage, such as excessive heat, flame, moving machine parts, sharp edges and corrosive chemicals.

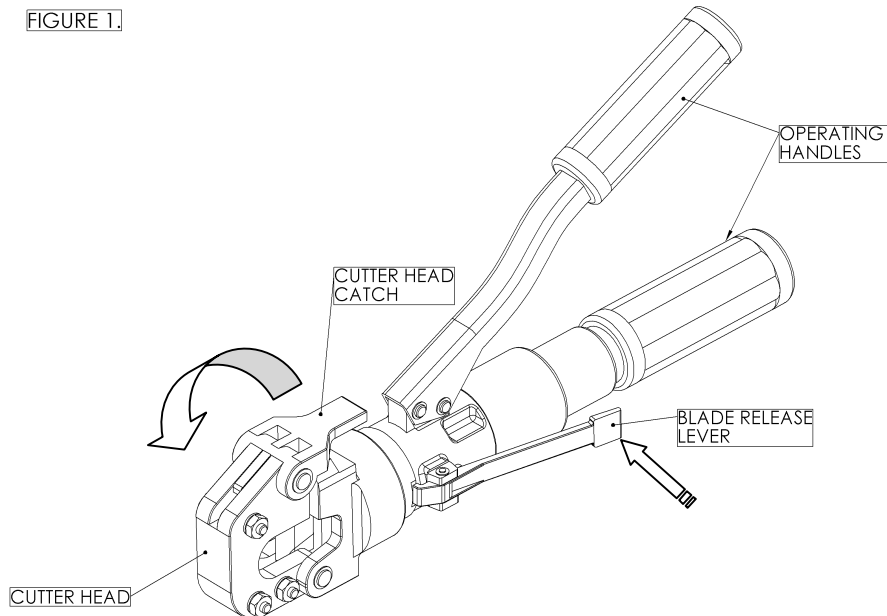
WARNING: Immediately replace worn or damaged parts with genuine Hi-Force parts.

WARNING: Always wear safety glasses and other appropriate personal protection equipment. The operator must take precautions against injury due to failure of the tool or work piece.

CUTTER SETUP AND OPERATION

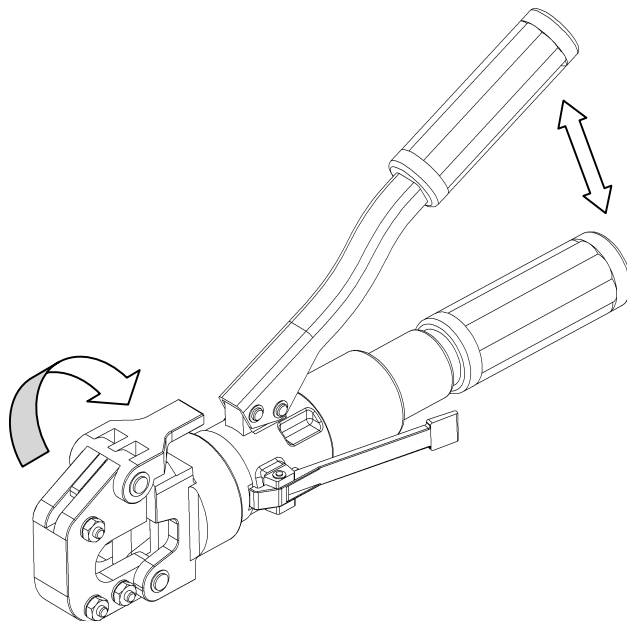
1. Press the blade release lever to fully retract the blade. Open the Cutter Head Catch by pulling it up and away from the Cutter body. Insert work piece. See Figure 1.

FIGURE 1.



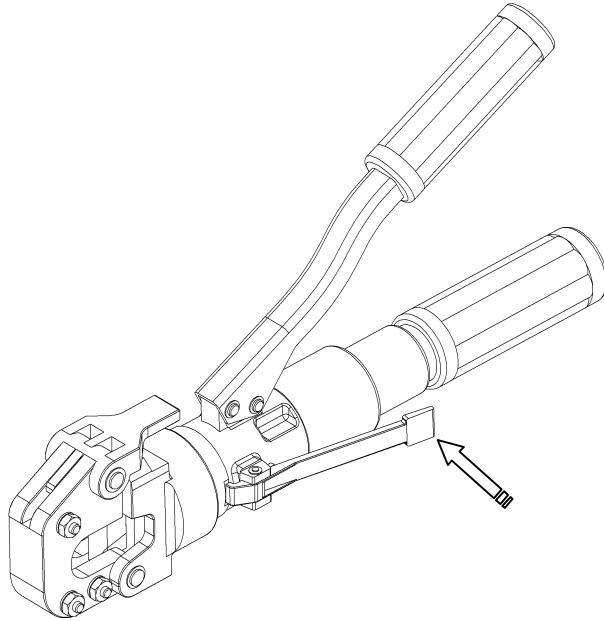
2. Close Cutter Head around work piece and secure Cutter Head Catch. Begin to pump the upper operating handle to advance the blade. See Figure 2.

FIGURE 2.



3. To retract the blade after work piece has been cut; simply press the Blade Release Lever, allowing the blade to fully retract. See Figure 3.

FIGURE 3.



4. Undo the cutter head catch to release the work piece as detailed in Figure 1.

Notes.

- After completing each cutting operation ALWAYS clean any debris from around the cutting blades. This will greatly reduce the possibility of Blade Jamming.
- After a period of operation, depending on the material being cut the Blade and Head Shear may develop a slight 'Roll Burr' along the cutting edge. This 'Roll Burr' can easily be removed by using a knife sharpening stone which should always be applied to the FLAT SIDE of the Blade.
- If Blade Jamming does occur first use hand force by unlatching the Head Shear and pulling firmly whilst depressing the Blade Release Lever. If the blade still does not come free 'tap' the Blade holding ram with a flat chisel and small hammer. Once Blade is free, check all components for damage and remove any 'Rolled Burr' from Blade edge.
- Before starting any cutting operations ALWAYS check that the Cutting Head Catch is securely fastened. Almost all of the damage caused to Cutting Blades and Head Shears is caused by operating the Cutter without the Catch properly secured.