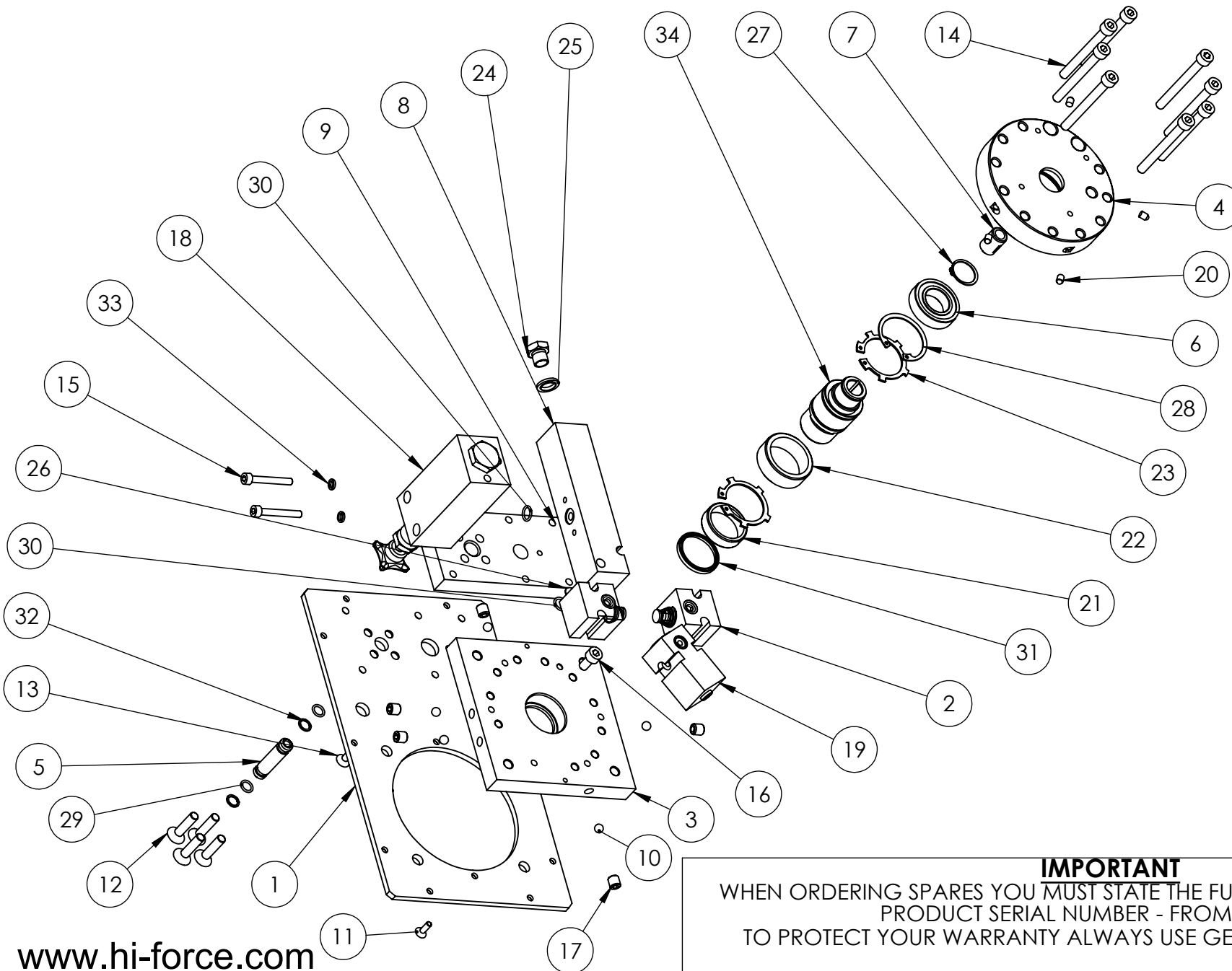


IMPORTANT
WHEN ORDERING SPARES YOU MUST STATE THE FULL PART NUMBER AND THE
PRODUCT SERIAL NUMBER - FROM THE LABEL
TO PROTECT YOUR WARRANTY ALWAYS USE GENUINE HI-FORCE PARTS.

MODEL	PUMP	VALVE	TANK	MOTOR	GEAR PUMP	CONNECTOR	FEED PIPE
HAP21 0 1 1	TYPE200-19	PM1	PPR10	AM1	GP48	15501B	FPC013NC001, FPC013FC001
HAP21 0 1 2	TYPE200-19	PM1	PPR25	AM1	GP48	15501B	FPC013AC001
HAP21 0 1 4	TYPE200-19	PM1	PPR40	AM1	GP48	15501B	FPC013AC002
HAP21 0 1 6	TYPE200-19	PM1	PPR60	AM1	GP48	15501B	FPC013AC002
HAP21 0 2 1	TYPE200-19	PMV2	PPR10	AM1	GP48	15501B	FPC013NC001, FPC013FC001
HAP21 0 2 2	TYPE200-19	PMV2	PPR25	AM1	GP48	15501B	FPC013AC001
HAP21 0 2 4	TYPE200-19	PMV2	PPR40	AM1	GP48	15501B	FPC013AC002
HAP21 0 2 6	TYPE200-19	PMV2	PPR60	AM1	GP48	15501B	FPC013AC002
HAP21 0 3 1	TYPE200-19	PMV3-L	PPR10	AM1	GP48	15501B	FPC03NC001, FPC013FC001
HAP21 0 3 2	TYPE200-19	PMV3-L	PPR25	AM1	GP48	15501B	FPC013AC001
HAP21 0 3 4	TYPE200-19	PMV3-L	PPR40	AM1	GP48	15501B	FPC013AC002
HAP21 0 3 6	TYPE200-19	PMV3-L	PPR60	AM1	GP48	15501B	FPC013AC002
HAP21 0 4 1	TYPE200-19	PMV4-L	PPR10	AM1	GP48	15501B	FPC013NC001, FPC013FC001
HAP21 0 4 2	TYPE200-19	PMV4-L	PPR25	AM1	GP48	15501B	FPC013AC001
HAP21 0 4 4	TYPE200-19	PMV4-L	PPR40	AM1	GP48	15501B	FPC013AC002
HAP21 0 4 6	TYPE200-19	PMV4-L	PPR60	AM1	GP48	15501B	FPC013AC002

IMPORTANT

WHEN ORDERING SPARES YOU MUST STATE THE FULL PART NUMBER AND THE PRODUCT SERIAL NUMBER - FROM THE LABEL TO PROTECT YOUR WARRANTY ALWAYS USE GENUINE HI-FORCE PARTS.



SHEET 1 OF 2.

IMPORTANT

WHEN ORDERING SPARES YOU MUST STATE THE FULL PART NUMBER AND THE PRODUCT SERIAL NUMBER - FROM THE LABEL TO PROTECT YOUR WARRANTY ALWAYS USE GENUINE HI-FORCE PARTS.

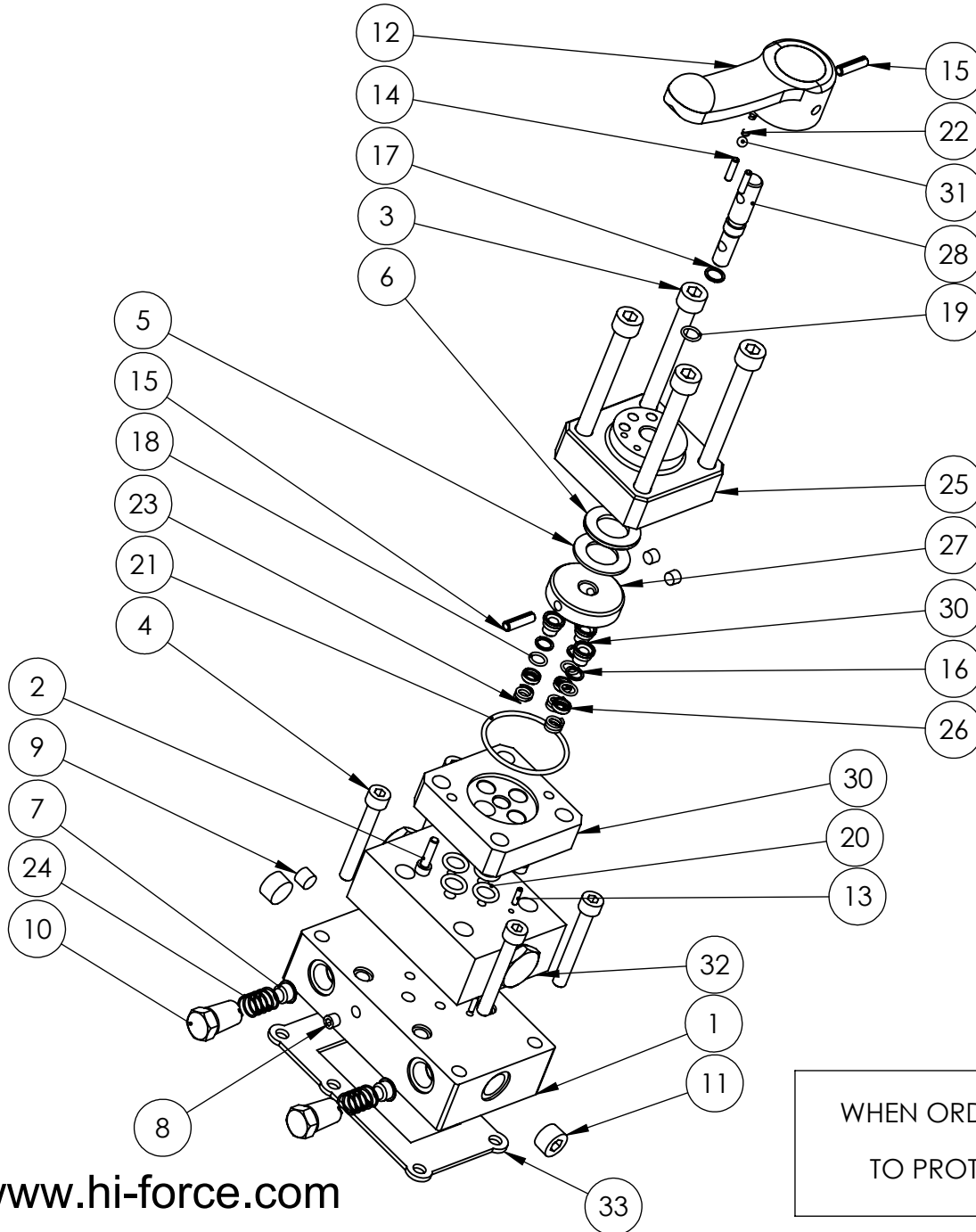
ITEM NO.	PART NUMBER	DESCRIPTION	QTY.
1	TAC000BA003	COVER PLATE	1
2	15494A	PISTON BLOCK ASSY.	2
3	15497	UPPER PLATE	1
4	15499	LOWER PLATE	1
5	E15503	CONNECTOR PIPE	1
6	BSC025MC001	LOWER PLATE BEARING	1
7	15507	ADAPTOR	1
8	17587	TRANSFER BLOCK	1
9	17588	VALVE PLATE	1
10	BAC008SN000	8mm BALL	5
11	BLC005HF016	SKT CSK SCREW	2
12	BLC008KF035	SKT CSK SCREW	4
13	BLC006JE016	SKT CSK SCREW	1
14	BLC008KC080	CAP HD SCREW	8
15	BLC006JC045	CAP HD SCREW	2
16	BLC008KD016	CAP HD SCREW	1
17	FAS010MA010	M10 X 10 CUP POINT GRUB SCREW	5
18	HPRV1	HIGH PRESSURE R/VALVE	1
19	LPRV1	LOW PRESSURE R/VALVE	1
20	BPC006RS001	SEALING PLUG	4
21	BSC035NC001	UPPER PLATE BEARING	1
22	BSC040ND001	ECCENTRIC BEARING	1
23	STC040AA001	CIRCLIP TYPE 200/300	2
24	FAS006GJ010	1/4 INCH BLANKING PLUG	1
25	X	DOWTY WASHER	1
26	FFC012MA001	SUCTION FILTER	1
27	STC025AA001	CIRCLIP	1
28	STC047BA001	CIRCLIP	1
29	X	O - RING	2
30	X	O - RING	2
31	X	UPPER PLATE OIL SEAL	1
32	X	BACK UP RING	2
33	WAC006BC001	SPRING WASHER	2
34	15498	19MM DRIVE SHAFT	1

NOTE: PARTS MARKED 'X' SUPPLIED IN KIT HEP207TP1-K ONLY.

SHEET 2 OF 2.

IMPORTANT

WHEN ORDERING SPARES YOU MUST STATE THE FULL PART NUMBER AND THE PRODUCT SERIAL NUMBER - FROM THE LABEL TO PROTECT YOUR WARRANTY ALWAYS USE GENUINE HI-FORCE PARTS.

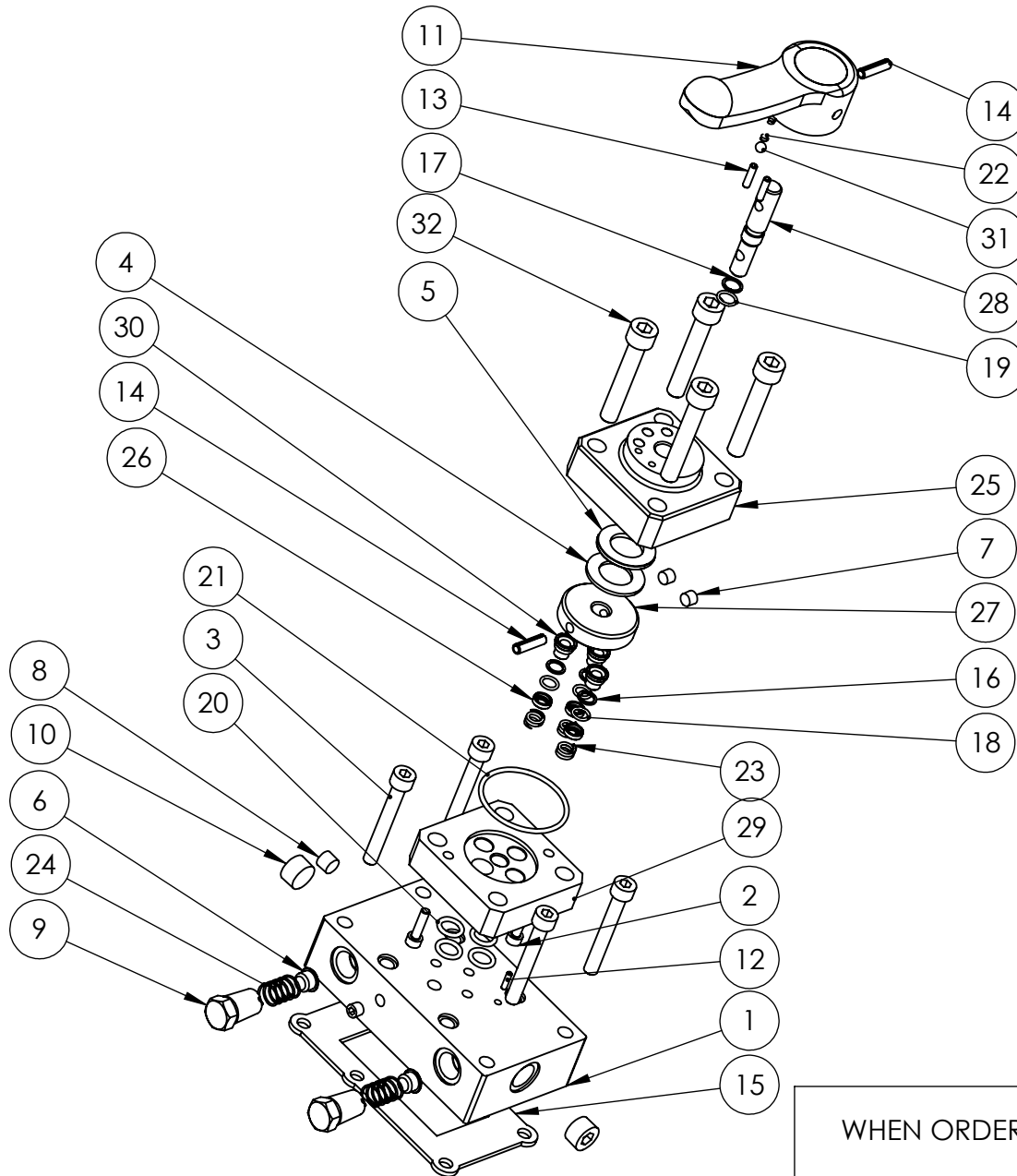


ITEM NO.	PART NUMBER	DESCRIPTION	QTY.
1	VFC010BF007	VALVE MOUNTING BLOCK	1
2	BLC005HU020	CAP HD SCREW	2
3	BLC010LC100	CAP HD SCREW	4
4	BLC008KC060	CAP HD SCREW	4
5	BSC035NA001	NEEDLE BEARING	1
6	BSC035NA002	HOUSING WASHER	1
7	FFC011MG001	LAST CHANCE FILTER	2
8	FPC002PN001	PLUG	3
9	FPC003PN001	PLUG	1
10	FPC010PN001	3/8 NPT BLANKING PLUG	2
11	FPC010PN002	3/8 X 7/8 IN. NPT SOCKET PLUG	2
12	HLC012LP002	HANDLE	1
13	PCC003RB006	SPRING PIN	2
14	PCC004RC001	SPRING PIN	2
15	PCC006RD000	SPRING PIN	2
16	X	BACK UP RING	3
17	X	BACK UP RING	1
18	X	O - RING	3
19	X	O - RING	1
20	X	O - RING	4
21	X	O - RING	1
22	SPC005CA001	SPRING	1
23	SPC010CA001	SPRING	3
24	SPC014LC001	COMPRESSION SPRING FOR FILTER	2
25	VFC000BD003	VALVE BODY	1
26	VFC000SC001	SHEAR SEAL COLLAR	3
27	VFC000SQ002	VALVE ROTOR	1
28	VFC000SR002	SPINDLE	1
30	VFC000ST001	SHEAR SEAL PLATE	1
30	VFC000SU001	SHEAR SEAL	3
31	X	6 mm BALL	1
32	V-8245	DUAL CHECK VALVE	1
33	X	GASKET	1

ALL PARTS MARKED 'X' SUPPLIED IN KIT PMV4TP1-K ONLY.

IMPORTANT

WHEN ORDERING SPARES YOU MUST STATE THE FULL PART NUMBER AND THE PRODUCT SERIAL NUMBER - FROM THE LABEL TO PROTECT YOUR WARRANTY ALWAYS USE GENUINE HI-FORCE PARTS.

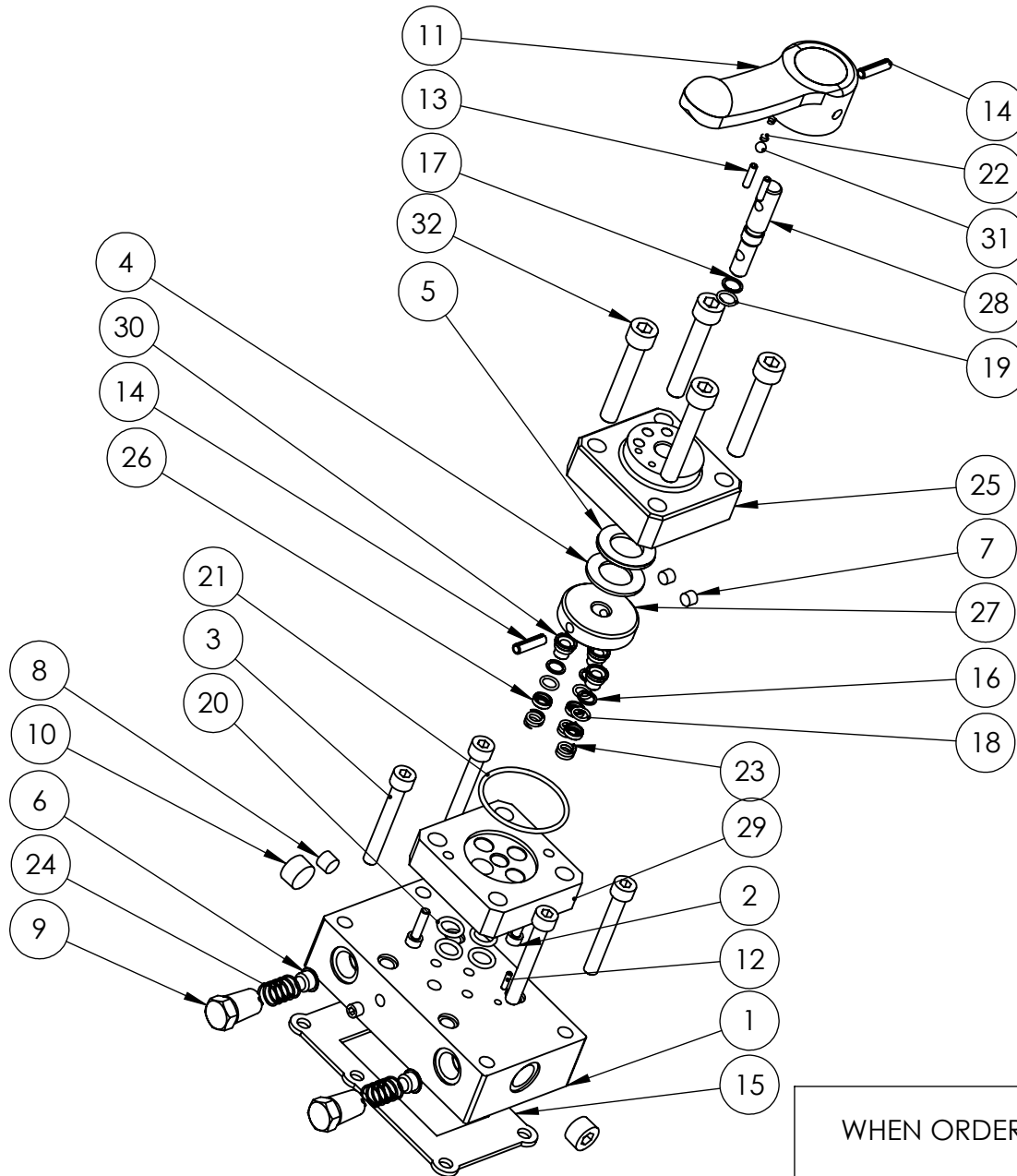


ITEM NO.	PART NUMBER	DESCRIPTION	QTY.
1	VFC010BF007	VALVE MOUNTING BLOCK	1
2	BLC005HU020	CAP HD SCREW	2
3	BLC008KC060	CAP HD SCREW	4
4	BSC035NA001	NEEDLE BEARING	1
5	BSC035NA002	HOUSING WASHER	1
6	FFC011MG001	LAST CHANCE FILTER	2
7	FPC002PN001	PLUG	3
8	FPC003PN001	PLUG	1
9	FPC010PN001	3/8 NPT BLANKING PLUG	2
10	FPC010PN002	3/8 X 7/8 IN. NPT SOCKET PLUG	2
11	HLC012LP002	HANDLE	1
12	PCC003RB006	SPRING PIN	1
13	PCC004RC001	SPRING PIN	2
14	PCC006RD000	SPRING PIN	2
15	X	GASKET	1
16	X	BACK UP RING	3
17	X	BACK UP RING	1
18	X	O - RING	3
19	X	O - RING	1
20	X	O - RING	4
21	X	O - RING	1
22	SPC005CA001	SPRING	1
23	SPC010CA001	SPRING	3
24	SPC014LC001	COMPRESSION SPRING FOR FILTER	2
25	VFC000BD003	VALVE BODY	1
26	VFC000SC001	SHEAR SEAL COLLAR	3
27	VFC000SQ002	VALVE ROTOR	1
28	VFC000SR002	SPINDLE	1
29	VFC000ST001	SHEAR SEAL PLATE	1
30	VFC000SU001	SHEAR SEAL	3
31	X	6 mm BALL	1
32	BLC010LC060	CAP HD SCREW	4

ALL PARTS MARKED 'X' SUPPLIED IN KIT PMV4TP1-K ONLY

IMPORTANT

WHEN ORDERING SPARES YOU MUST STATE THE FULL PART NUMBER AND THE PRODUCT SERIAL NUMBER - FROM THE LABEL TO PROTECT YOUR WARRANTY ALWAYS USE GENUINE HI-FORCE PARTS.



ITEM NO.	PART NUMBER	DESCRIPTION	QTY.
1	VFC010BF007	VALVE MOUNTING BLOCK	1
2	BLC005HU020	CAP HD SCREW	2
3	BLC008KC060	CAP HD SCREW	4
4	BSC035NA001	NEEDLE BEARING	1
5	BSC035NA002	HOUSING WASHER	1
6	FFC011MG001	LAST CHANCE FILTER	2
7	FPC002PN001	PLUG	3
8	FPC003PN001	PLUG	1
9	FPC010PN001	3/8 NPT BLANKING PLUG	2
10	FPC010PN002	3/8 X 7/8 IN. NPT SOCKET PLUG	2
11	HLC012LP002	HANDLE	1
12	PCC003RB006	SPRING PIN	1
13	PCC004RC001	SPRING PIN	2
14	PCC006RD000	SPRING PIN	2
15	X	GASKET	1
16	X	BACK UP RING	3
17	X	BACK UP RING	1
18	X	O - RING	3
19	X	O - RING	1
20	X	O - RING	4
21	X	O - RING	1
22	SPC005CA001	SPRING	1
23	SPC010CA001	SPRING	3
24	SPC014LC001	COMPRESSION SPRING FOR FILTER	2
25	VFC000BD003	VALVE BODY	1
26	VFC000SC001	SHEAR SEAL COLLAR	3
27	VFC000SQ002	VALVE ROTOR	1
28	VFC000SR002	SPINDLE	1
29	VFC000ST001	SHEAR SEAL PLATE	1
30	VFC000SU001	SHEAR SEAL	3
31	X	6 mm BALL	1
32	BLC010LC060	CAP HD SCREW	4

ALL PARTS MARKED 'X' SUPPLIED IN KIT PMV4TP1-K ONLY

IMPORTANT

WHEN ORDERING SPARES YOU MUST STATE THE FULL PART NUMBER AND THE PRODUCT SERIAL NUMBER - FROM THE LABEL TO PROTECT YOUR WARRANTY ALWAYS USE GENUINE HI-FORCE PARTS.