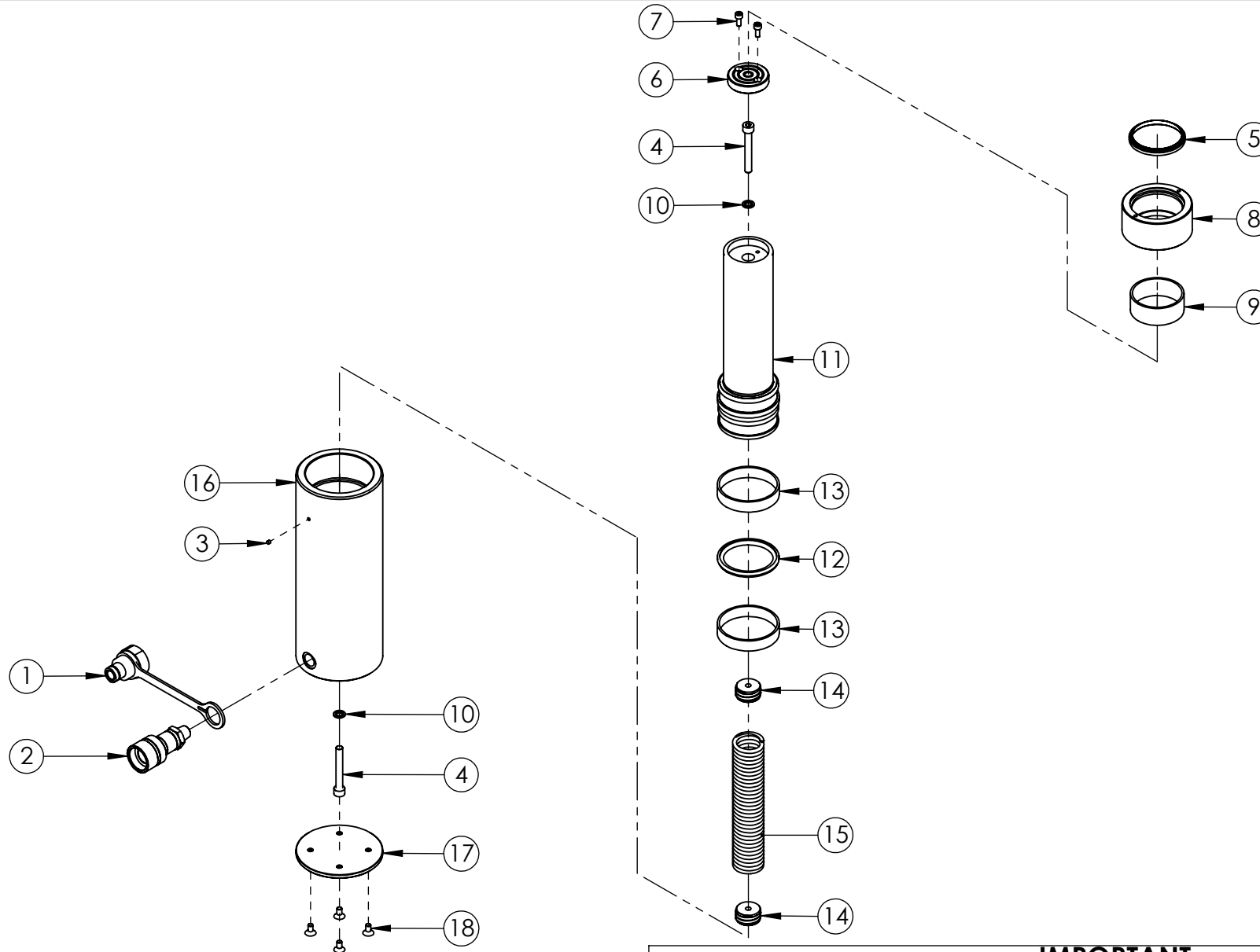


REVISION

1	3921
2	4119
3	5784
4	6163
5	
6	
7	
8	
9	
10	
11	
12	
13	
14	
15	
16	
17	
18	
19	
20	



**IMPORTANT**  
WHEN ORDERING SPARES YOU MUST STATE THE FULL PART NUMBER AND THE PRODUCT SERIAL NUMBER - FROM THE LABEL TO PROTECT YOUR WARRANTY ALWAYS USE GENUINE HI-FORCE PARTS.

ITEM NO.	PART NUMBER	DESCRIPTION	QTY.	SPARE PARTS	SERVICE PARTS
1	PPC1	DUST COVER	1		
2	CF1	COUPLER	1		
3	FFC004RC001	FILTER	1		
4	BLC008KD060	M8 x 60 HEX SOCKET CAP HEAD SCREW	2		
5	SEC060XE002	WIPER	1		✓
6	HA30	SADDLE	1		
7	BLC005HD012	M5 x 12 HEX SOCKET CAP HEAD SCREW	2		
8	SRC060SG004	STOP RING	1		
9	BSC060PE001	BEARING	1		
10	WAC008KD000	DOWTY WASHER	2		✓
11	PRC075YH001	PISTON	1		
12	SEC075PA001	STEP SEAL	1		✓
13	BSC075PC001	BEARING	2		
14	SIC029TC002	SPRING INSERT	2		
15	SPC038TJ003	SPRING.	1		
16	CBC075VH001	CYLINDER	1		
17	SFC104HA001	BASE PLATE	1		
18	BLC006JE012	M6 x 12 HEX SOCKET COUNTERSUNK SCREW	4		

REVISION

1	3921
2	4119
3	5784
4	6163
5	
6	
7	
8	
9	
10	
11	
12	
13	
14	
15	
16	
17	
18	
19	
20	

**NOTES:**

- ALL PARTS ARE AVAILABLE TO BE ORDERED AS SPARE PARTS (UNLESS MARKED WITH **x**).

- ONLY PARTS MARKED WITH ✓ ARE AVAILABLE AS BOTH SPARE PARTS OR SERVICEABLE PARTS, FROM HAS30TP1-K SERVICE KIT. (REFER TO HAS30TP1-K EVD FOR FULL PARTS LIST)

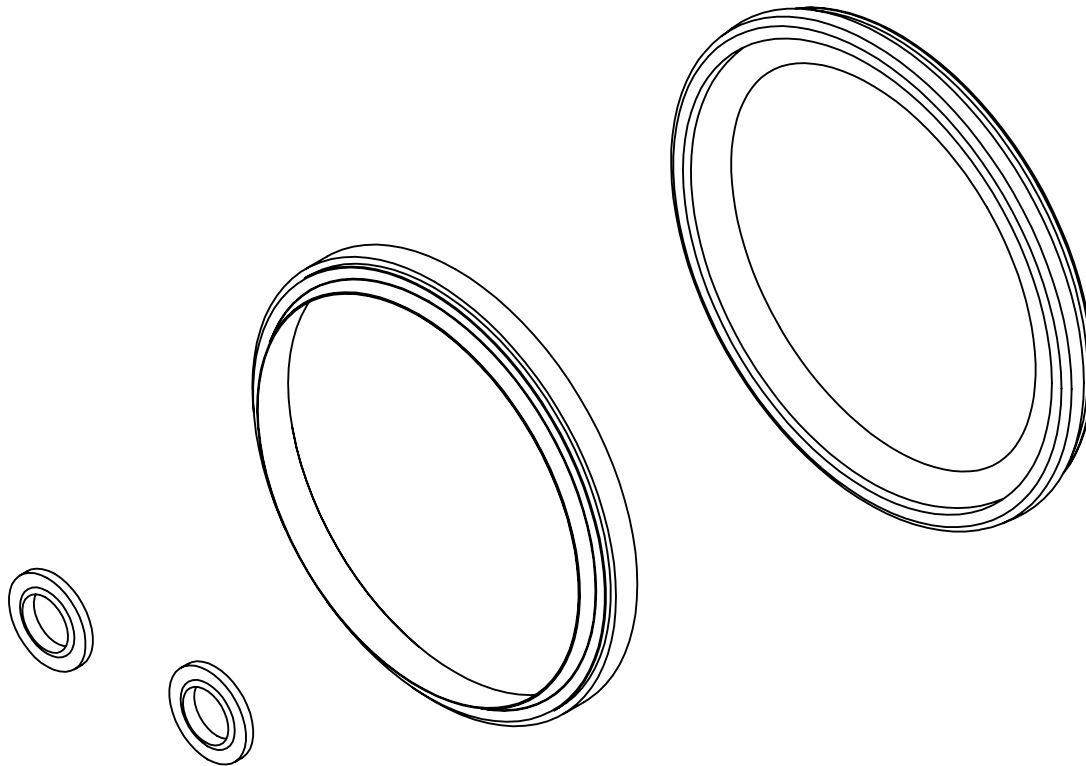
**IMPORTANT**

WHEN ORDERING SPARES YOU MUST STATE THE FULL PART NUMBER AND THE PRODUCT SERIAL NUMBER - FROM THE LABEL TO PROTECT YOUR WARRANTY ALWAYS USE GENUINE HI-FORCE PARTS.

REVISION

1	6163
2	
3	
4	
5	
6	
7	
8	
9	
10	
11	
12	
13	
14	
15	
16	
17	
18	
19	
20	

ITEM NO.	PART NUMBER	DESCRIPTION	QTY.
1	SEC060XE002	WIPER	1
2	SEC075PA001	STEP SEAL	1
3	WAC008KD000	DOWTY WASHER	2



**IMPORTANT**  
WHEN ORDERING SPARES YOU MUST STATE THE FULL PART NUMBER AND THE  
PRODUCT SERIAL NUMBER - FROM THE LABEL  
TO PROTECT YOUR WARRANTY ALWAYS USE GENUINE HI-FORCE PARTS.