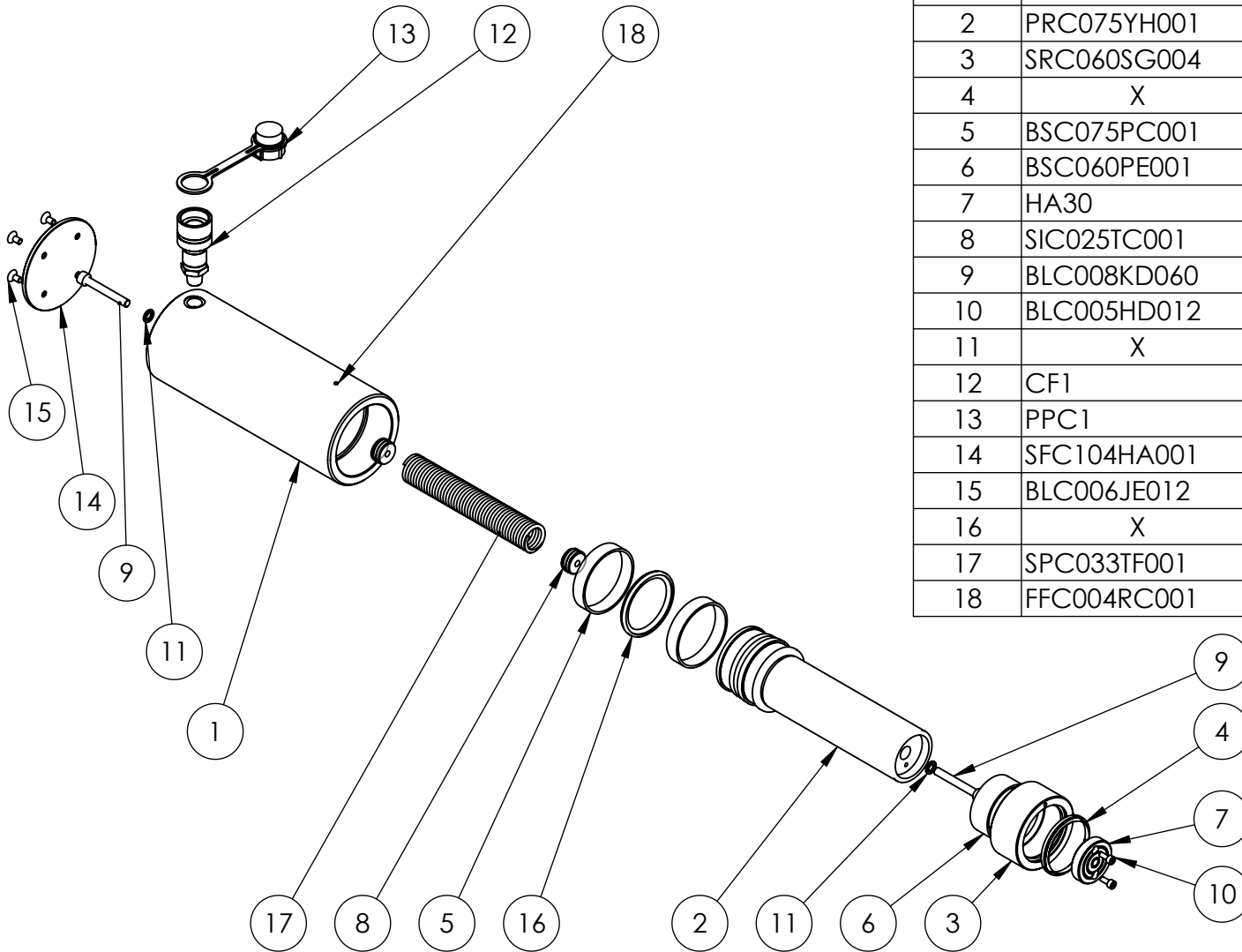


| ITEM NO. | PART NUMBER | DESCRIPTION | QTY. | REVISION | |
|----------|-------------|---------------------|------|----------|------|
| | | | | | |
| 1 | CBC075VH001 | CYLINDER | 1 | 1 | 3921 |
| 2 | PRC075YH001 | PISTON | 1 | 2 | 4119 |
| 3 | SRC060SG004 | STOP RING | 1 | 3 | |
| 4 | X | WIPER | 1 | 4 | |
| 5 | BSC075PC001 | BEARING | 2 | 5 | |
| 6 | BSC060PE001 | BEARING | 1 | 6 | |
| 7 | HA30 | SADDLE | 1 | 7 | |
| 8 | SIC029TC002 | SPRING INSERT | 2 | 8 | |
| 9 | BLC008KD060 | SOCKET CAP HD SCREW | 2 | 9 | |
| 10 | BLC005HD012 | SOCKET CAP HD SCREW | 2 | 10 | |
| 11 | X | DOWTY WASHER | 2 | 11 | |
| 12 | CF1 | COUPLER | 1 | 12 | |
| 13 | PPC1 | DUST COVER | 1 | 13 | |
| 14 | SFC104HA001 | BASE PLATE | 1 | 14 | |
| 15 | BLC006JE012 | SKT CSK SCREW | 4 | 15 | |
| 16 | X | STEP SEAL | 1 | 16 | |
| 17 | SPC038TJ003 | SPRING. | 1 | 17 | |
| 18 | FFC004RC001 | FILTER | 1 | 18 | |
| | | | | 19 | |
| | | | | 20 | |

ITEMS MARKED "X" ARE AVAILBLE IN
SERVICE KIT HAS30TP1-K ONLY

IMPORTANT

WHEN ORDERING SPARES YOU MUST STATE THE FULL PART NUMBER AND THE
PRODUCT SERIAL NUMBER - FROM THE LABEL
TO PROTECT YOUR WARRANTY ALWAYS USE GENUINE HI-FORCE PARTS.



| ITEM NO. | PART NUMBER | DESCRIPTION | QTY. | REVISION |
|----------|-------------|---------------------|------|----------|
| 1 | CBC075VH001 | CYLINDER | 1 | 1 3921 |
| 2 | PRC075YH001 | PISTON | 1 | 2 |
| 3 | SRC060SG004 | STOP RING | 1 | 3 |
| 4 | X | WIPER | 1 | 4 |
| 5 | BSC075PC001 | BEARING | 2 | 5 |
| 6 | BSC060PE001 | BEARING | 1 | 6 |
| 7 | HA30 | SADDLE | 1 | 7 |
| 8 | SIC025TC001 | INSERT | 2 | 8 |
| 9 | BLC008KD060 | SOCKET CAP HD SCREW | 2 | 9 |
| 10 | BLC005HD012 | SOCKET CAP HD SCREW | 2 | 10 |
| 11 | X | DOWTY WASHER | 2 | 11 |
| 12 | CF1 | COUPLER | 1 | 12 |
| 13 | PPC1 | DUST COVER | 1 | 13 |
| 14 | SFC104HA001 | BASE PLATE | 1 | 14 |
| 15 | BLC006JE012 | SKT CSK SCREW | 4 | 15 |
| 16 | X | STEP SEAL | 1 | 16 |
| 17 | SPC033TF001 | TENSION SPRING | 1 | 17 |
| 18 | FFC004RC001 | FILTER | 1 | 18 |

ITEMS MARKED "X" ARE AVAILBLE IN SERVICE KIT HAS30TP1-K ONLY

IMPORTANT
WHEN ORDERING SPARES YOU MUST STATE THE FULL PART NUMBER AND THE PRODUCT SERIAL NUMBER - FROM THE LABEL TO PROTECT YOUR WARRANTY ALWAYS USE GENUINE HI-FORCE PARTS.