

ITEM NO.	PART NUMBER	DESCRIPTION	QTY.
1	CBC190AH001	CYLINDER	1
2	PPC1	DUST COVER	2
3	BS4278-M12	EYEBOLT	2
4	CF1	COUPLER	2
5	PRC190DH002	PISTON	1
6	HD200	SADDLE	1
7	X	ROD SEAL	1
8	X	WIPER	1
9	X	BACK UP RING	1
10	X	PISTON SEAL	1
11	X	O - RING	1
12	SRC140WQ002	STOP RING	1
13	SSC190EA001	SEAL RETAINER	1
14	VRA700AF002	RELIEF VALVE	1
15	X	DOWTY WASHER	1
16	PTP248TP200	THREAD PROTECTOR	1

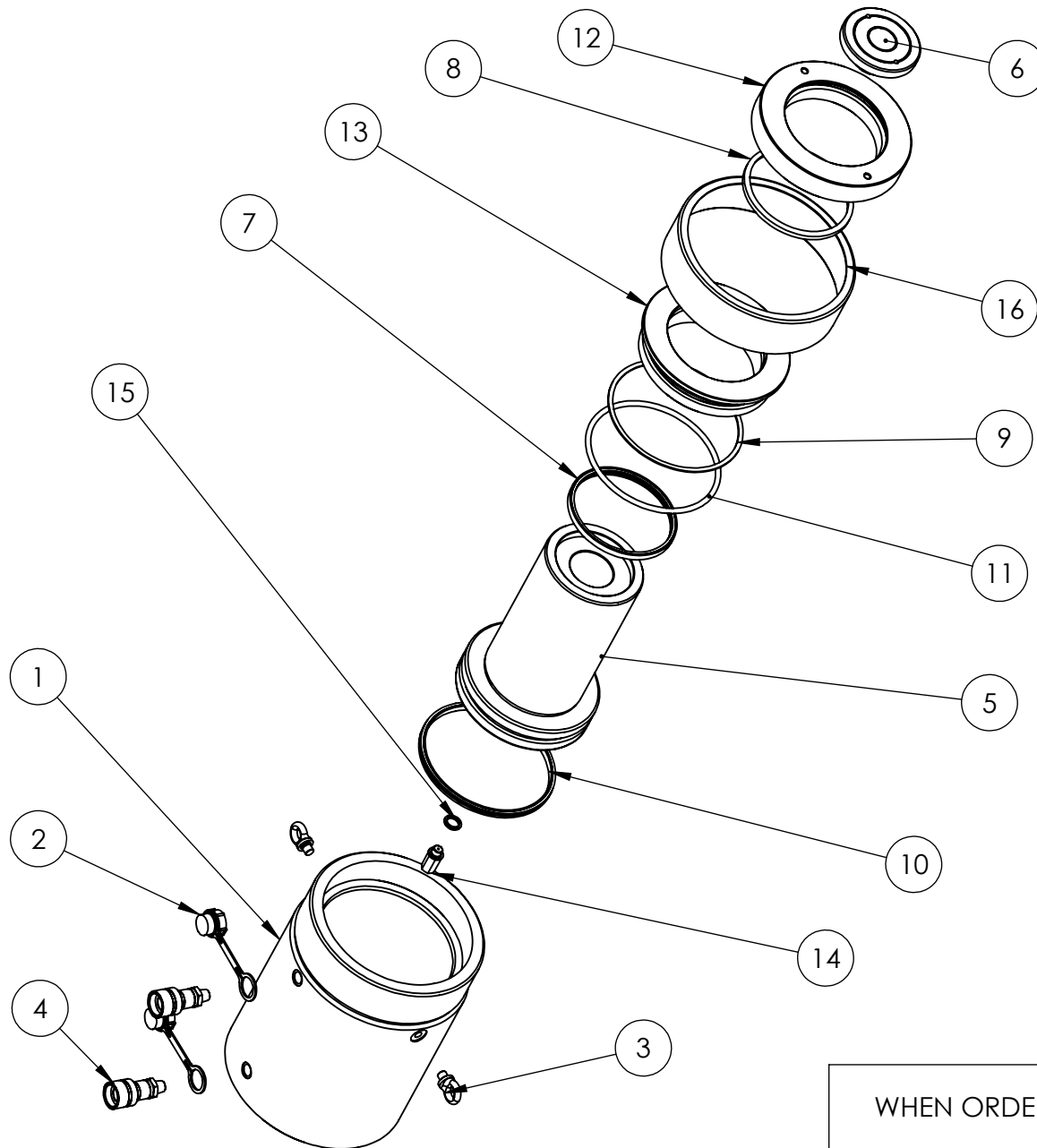
REVISION

1	
2	4117
3	
4	
5	
6	
7	
8	
9	
10	
11	
12	
13	
14	
15	
16	
17	
18	
19	
20	

ALL ITEMS MARKED 'X' SUPPLIED IN KIT HDA200TP1-K ONLY.

**IMPORTANT**

WHEN ORDERING SPARES YOU MUST STATE THE FULL PART NUMBER AND THE PRODUCT SERIAL NUMBER - FROM THE LABEL TO PROTECT YOUR WARRANTY ALWAYS USE GENUINE HI-FORCE PARTS.



ITEM NO.	PART NUMBER	DESCRIPTION	QTY.
1	CBC190AH001	CYLINDER	1
2	PPC1	DUST COVER	2
3	BS4278-M12	EYEBOLT	2
4	CF1	COUPLER	2
5	PRC190DH001	PISTON	1
6	HD200	SADDLE	1
7	X	ROD SEAL	1
8	X	WIPER	1
9	X	BACK UP RING	1
10	X	PISTON SEAL	1
11	X	O - RING	1
12	SRC140WQ002	STOP RING	1
13	SSC190EA001	SEAL RETAINER	1
14	VRA700AF002	RELIEF VALVE	1
15	X	DOWTY WASHER	1
16	PTP248TP200	THREAD PROTECTOR	1

REVISION

1	4117
2	
3	
4	
5	
6	
7	
8	
9	
10	
11	
12	
13	
14	
15	
16	
17	
18	
19	
20	

ALL ITEMS MARKED 'X' SUPPLIED IN KIT HDA200TP1-K ONLY.

**IMPORTANT**

WHEN ORDERING SPARES YOU MUST STATE THE FULL PART NUMBER AND THE PRODUCT SERIAL NUMBER - FROM THE LABEL TO PROTECT YOUR WARRANTY ALWAYS USE GENUINE HI-FORCE PARTS.