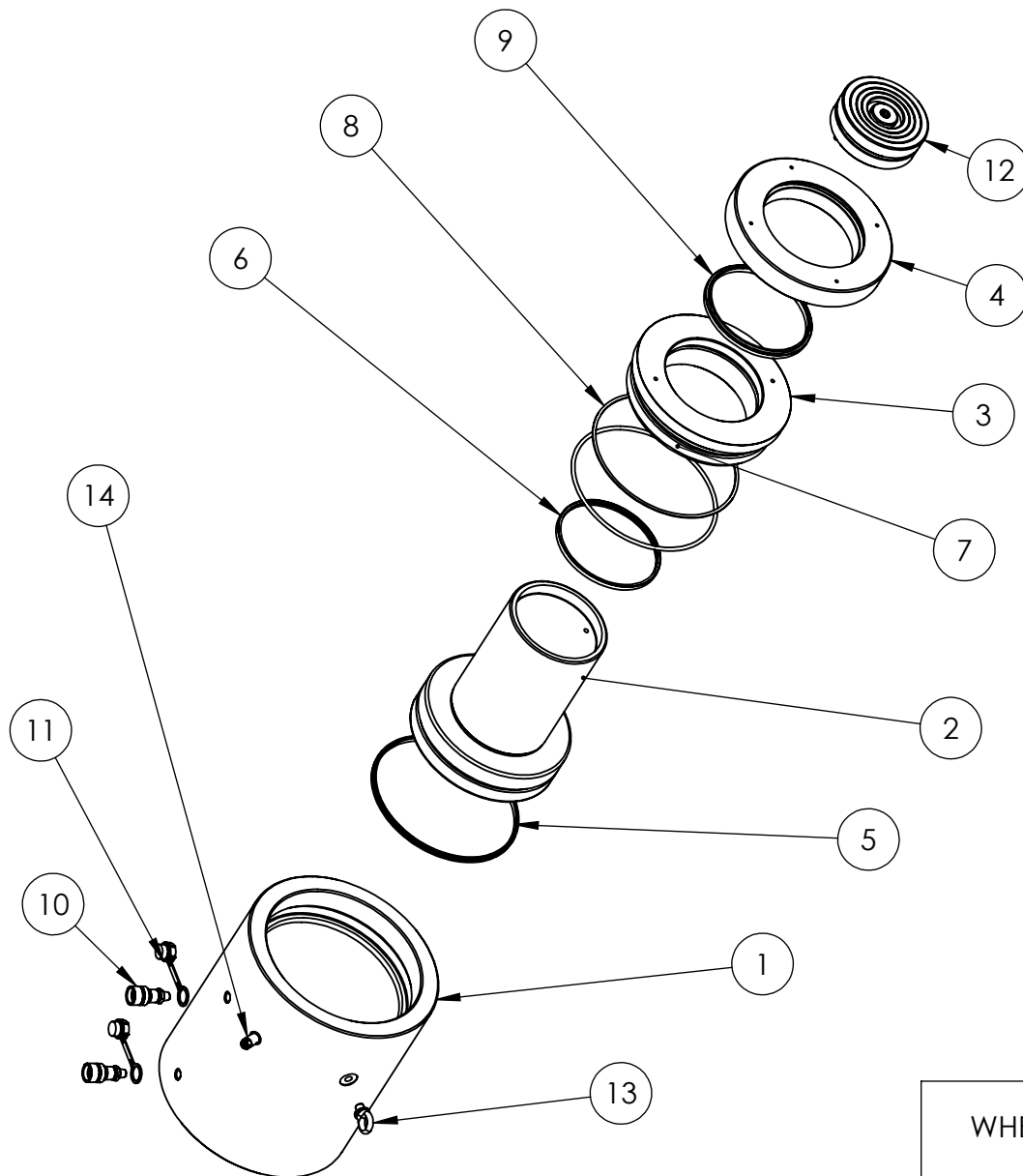


|    |      |
|----|------|
| 1  |      |
| 2  | 5783 |
| 3  |      |
| 4  |      |
| 5  |      |
| 6  |      |
| 7  |      |
| 8  |      |
| 9  |      |
| 10 |      |
| 11 |      |
| 12 |      |
| 13 |      |
| 14 |      |
| 15 |      |
| 16 |      |
| 17 |      |
| 18 |      |
| 19 |      |
| 20 |      |



| ITEM NO. | PART NUMBER | DESCRIPTION             | QTY. |
|----------|-------------|-------------------------|------|
| 1        | CBC305BH003 | CYLINDER                | 1    |
| 2        | PRC305QH005 | PISTON                  | 1    |
| 3        | SSC305EA004 | SEAL RETAINER           | 1    |
| 4        | SRC203WV002 | STOP RING               | 1    |
| 5        | X           | PISTON SEAL             | 1    |
| 6        | X           | ROD SEAL                | 1    |
| 7        | X           | O-RING                  | 1    |
| 8        | X           | BACK UP RING            | 1    |
| 9        | X           | WIPER                   | 1    |
| 10       | CF1         | COUPLER                 | 2    |
| 11       | PPC1        | DUST COVER              | 2    |
| 12       | HD500T      | TILTING SADDLE ASSEMBLY | 1    |
| 13       | BS4278-M16  | EYEBOLT                 | 2    |
| 14       | VRA001AF002 | RELIEF VALVE            | 1    |

ALL ITEMS MARKED 'X' SUPPLIED IN KIT HDA500TP1-K ONLY.

**IMPORTANT**

WHEN ORDERING SPARES YOU MUST STATE THE FULL PART NUMBER AND THE PRODUCT SERIAL NUMBER - FROM THE LABEL TO PROTECT YOUR WARRANTY ALWAYS USE GENUINE HI-FORCE PARTS.