

ITEM NO.	PART NUMBER	DESCRIPTION	QTY.	REVISION	
				1	
				2	3983
1	CBC165JH002	CYLINDER	1	3	
2	PRC165HH002	PISTON	1	4	
3	SFC095VC001	GUIDE TUBE	1	5	
4	SRC140WQ006	STOP RING	1	6	
5	SSC165CA001	SEAL RETAINER	1	7	
6	SRC082PL001	RETAINER	1	8	
7	HA1003	SADDLE	1	9	
8	STC095CA001	CIRCLIP	1	10	
9	STC130BA001	CIRCLIP	1	11	
10	CF1	COUPLER	2	12	
11	PPC1	DUST COVER	2	13	
12	VRA700AF002	RELIEF VALVE	1	14	
13	BS4278-M12	EYEBOLT	2	15	
14	X	PISTON SEAL	1	16	
15	X	ROD SEAL	1	17	
16	X	ROD SEAL	1	18	
17	X	O - RING	1	19	
18	X	BACK UP RING	1	20	
19	X	O - RING	1		
20	X	BACK UP RING	1		
21	X	WIPER	1		
22	X	WIPER	1		
23	PTP213TH100	THREAD PROTECTOR	1		

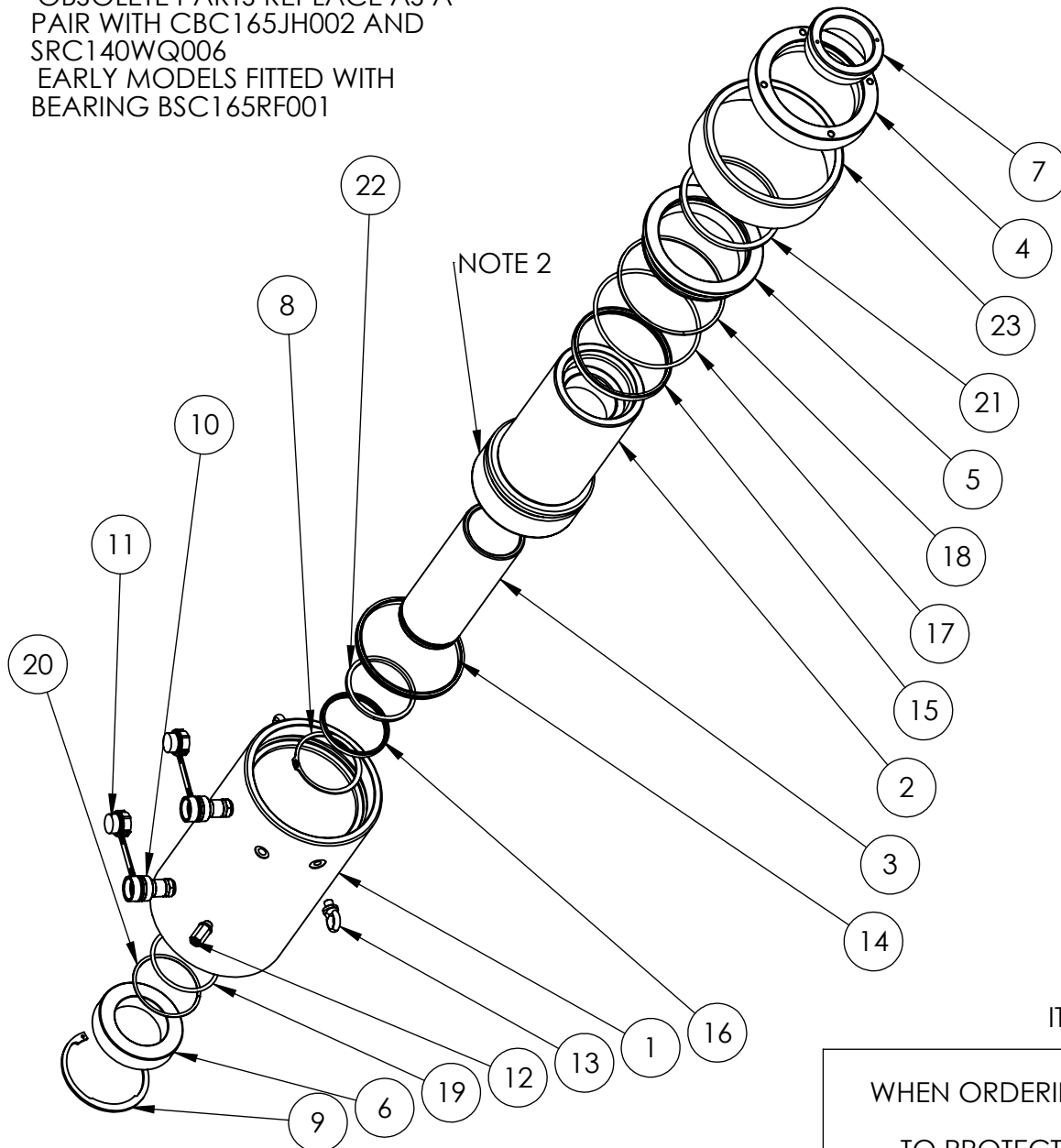
ITEMS MARKED X ARE AVAILABLE IN SERVICE KIT HHR100TP1-K

**IMPORTANT**

WHEN ORDERING SPARES YOU MUST STATE THE FULL PART NUMBER AND THE PRODUCT SERIAL NUMBER - FROM THE LABEL TO PROTECT YOUR WARRANTY ALWAYS USE GENUINE HI-FORCE PARTS.

NOTES:

1. OBSOLETE PARTS REPLACE AS A PAIR WITH CBC165JH002 AND SRC140WQ006
2. EARLY MODELS FITTED WITH BEARING BSC165RF001



ITEM NO.	PART NUMBER	DESCRIPTION	QTY.	REVISION
				1 3983
				2
1	CBC165JH001 (NOTE 1)	CYLINDER	1	3
2	PRC165HH002	PISTON	1	4
3	SFC095VC001	GUIDE TUBE	1	5
4	SRC140WQ001 (NOTE 1)	STOP RING	1	6
5	SSC165CA001	SEAL RETAINER	1	7
6	SRC082PL001	RETAINER	1	8
7	HA1003	SADDLE	1	9
8	STC095CA001	CIRCLIP	1	10
9	STC130BA001	CIRCLIP	1	11
10	CF1	COUPLER	2	12
11	PPC1	DUST COVER	2	13
12	VRA700AF002	RELIEF VALVE	1	14
13	BS4278-M12	EYEBOLT	2	15
14	X	PISTON SEAL	1	16
15	X	ROD SEAL	1	17
16	X	ROD SEAL	1	18
17	X	O - RING	1	19
18	X	BACK UP RING	1	20
19	X	O - RING	1	
20	X	BACK UP RING	1	
21	X	WIPER	1	
22	X	WIPER	1	
23	PTP213TH100	THREAD PROTECTOR	1	

ITEMS MARKED X ARE AVAILABLE IN SERVICE KIT HHR100TP1-K

**IMPORTANT**

WHEN ORDERING SPARES YOU MUST STATE THE FULL PART NUMBER AND THE PRODUCT SERIAL NUMBER - FROM THE LABEL TO PROTECT YOUR WARRANTY ALWAYS USE GENUINE HI-FORCE PARTS.