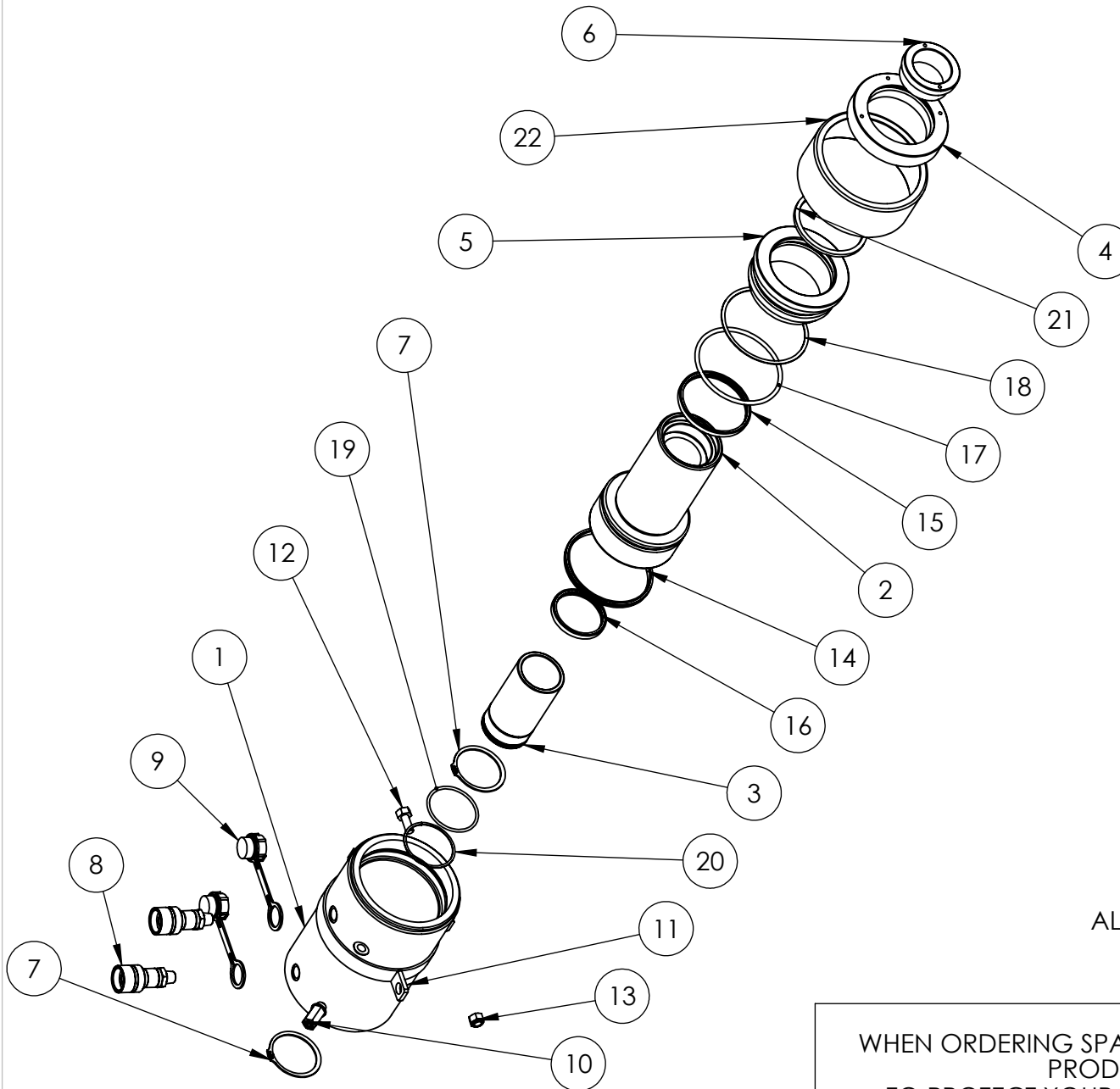


ITEM NO.	PART NUMBER	DESCRIPTION	QTY.	REVISION	
				1	
				2	3983
1	CBC124JE001	CYLINDER	1	3	
2	PRC124HE002	PISTON	1	4	
3	SFC067VB001	GUIDE TUBE	1	5	
4	SRC092SL003	STOP RING	1	6	
5	SSC124EA001	RETAINER	1	7	
6	HA603	SADDLE	1	8	
7	STC067CA001	CIRCLIP	2	9	
8	CF1	COUPLER	2	10	
9	PPC1	DUST COVER	2	11	
10	VRA700AF002	RELIEF VALVE	1	12	
11	FLC160LA002	LIFTING RING	1	13	
12	BLC010LB030	BOLT	1	14	
13	NUC010LC000	NUT	1	15	
14	X	PISTON SEAL	1	16	
15	X	ROD SEAL	1	17	
16	X	ROD SEAL	1	18	
17	X	O - RING	1	19	
18	X	BACK UP RING	1	20	
19	X	O - RING	1		
20	X	BACK UP RING	1		
21	X	WIPER	1		
22	PTP159TH060	THREAD PROTECTOR	1		

ALL ITEMS MARKED 'X' SUPPLIED IN KIT HHR60TP1-K ONLY.

**IMPORTANT**

WHEN ORDERING SPARES YOU MUST STATE THE FULL PART NUMBER AND THE PRODUCT SERIAL NUMBER - FROM THE LABEL TO PROTECT YOUR WARRANTY ALWAYS USE GENUINE HI-FORCE PARTS.



ITEM NO.	PART NUMBER	DESCRIPTION	QTY.	REVISION
				1 3983
1	CBC124JE001	CYLINDER	1	2
2	PRC124HE002	PISTON	1	3
3	SFC067VB001	GUIDE TUBE	1	4
4	SRC092SL001	STOP RING	1	5
5	SSC124EA001	RETAINER	1	6
6	HA603	SADDLE	1	7
7	STC067CA001	CIRCLIP	2	8
8	CF1	COUPLER	2	9
9	PPC1	DUST COVER	2	10
10	VRA700AF002	RELIEF VALVE	1	11
11	FLC160LA002	LIFTING RING	1	12
12	BLC010LB030	BOLT	1	13
13	NUC010LC000	NUT	1	14
14	X	PISTON SEAL	1	15
15	X	ROD SEAL	1	16
16	X	ROD SEAL	1	17
17	X	O - RING	1	18
18	X	BACK UP RING	1	19
19	X	O - RING	1	20
20	X	BACK UP RING	1	
21	X	WIPER	1	
22	PTP159TH060	THREAD PROTECTOR	1	

ALL ITEMS MARKED 'X' SUPPLIED IN KIT HHR60TP1-K ONLY.

**IMPORTANT**

WHEN ORDERING SPARES YOU MUST STATE THE FULL PART NUMBER AND THE PRODUCT SERIAL NUMBER - FROM THE LABEL TO PROTECT YOUR WARRANTY ALWAYS USE GENUINE HI-FORCE PARTS.