

| ITEM NO. | PART NUMBER | DESCRIPTION         | QTY. |
|----------|-------------|---------------------|------|
| 1        | CBC043SB001 | CYLINDER            | 1    |
| 2        | PRC043AB003 | PISTON              | 1    |
| 3        | SRC035WD005 | STOP RING           | 1    |
| 4        | CF1         | COUPLER             | 1    |
| 5        | PPC1        | DUST COVER          | 1    |
| 6        | SPC022SB002 | SPRING              | 1    |
| 7        | SIC013TB001 | INSERT              | 2    |
| 8        | X           | SOCKET CAP HD SCREW | 2    |
| 9        | X           | PISTON SEAL         | 1    |
| 10       | X           | WIPER               | 1    |
| 11       | PTP057TP010 | THREAD PROTECTOR    | 1    |
| 12       | X           | WASHER              | 2    |
| 13       | HA10        | SADDLE              | 1    |
| 14       | X           | O - RING            | 1    |

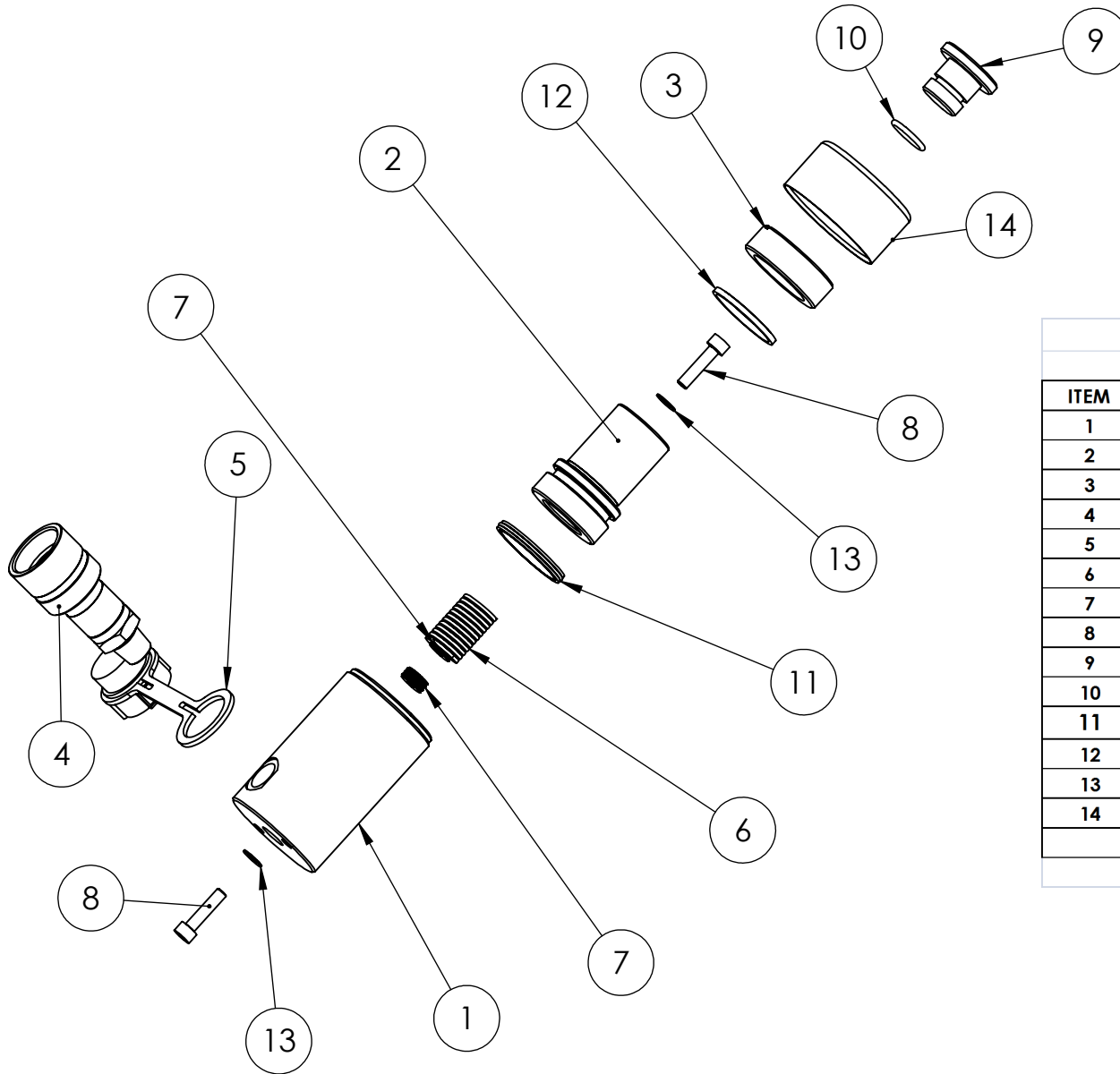
| REVISION |      |
|----------|------|
| 1        |      |
| 2        | 3982 |
| 3        |      |
| 4        |      |
| 5        |      |
| 6        |      |
| 7        |      |
| 8        |      |
| 9        |      |
| 10       |      |
| 11       |      |
| 12       |      |
| 13       |      |
| 14       |      |
| 15       |      |
| 16       |      |
| 17       |      |
| 18       |      |
| 19       |      |
| 20       |      |

ITEMS MARKED "X"  
SUPPLIED IN HSS10TP2-K ONLY

NOTE: IF SPRING IS REPLACED  
THE INSERTS SHOULD ALSO BE REPLACED

**IMPORTANT**

WHEN ORDERING SPARES YOU MUST STATE THE FULL PART NUMBER AND THE PRODUCT SERIAL NUMBER - FROM THE LABEL TO PROTECT YOUR WARRANTY ALWAYS USE GENUINE HI-FORCE PARTS.



| ITEM | DESCRIPTION        | UP TO SERIAL AW6897 |                   | FROM SERIAL AW6897 |                   |
|------|--------------------|---------------------|-------------------|--------------------|-------------------|
|      |                    | QTY                 | PART NUMBER       | QTY                | PART NUMBER       |
| 1    | CYLINDER           | 1                   | CBC043SB001       | 1                  | CBC043SB001       |
| 2    | PISTON             | 1                   | PRC043AB001       | 1                  | PRC043AB003       |
| 3    | STOP RING          | 1                   | SRC035W D003      | 1                  | SRC035W D005      |
| 4    | COUPLER            | 1                   | CF1               | 1                  | CF1               |
| 5    | DUST COVER         | 1                   | PPC1              | 1                  | PPC1              |
| 6    | SPRING             | 1                   | SPC022SB002       | 1                  | SPC022SB002       |
| 7    | INSERT             | 2                   | SIC013TB001       | 2                  | SIC013TB001       |
| 8    | CAP HD SCREW       | 2                   | X                 | 2                  | X                 |
| 9    | SADDLE             | 1                   | HA10              | 1                  | HA10              |
| 10   | O-RING             | 1                   | X                 | 1                  | X                 |
| 11   | PISTON SEAL        | 1                   | X                 | 1                  | X                 |
| 12   | WIPER              | 1                   | X                 | 1                  | X                 |
| 13   | WASHER             | 2                   | X                 | 2                  | X                 |
| 14   | THREAD PROTECTOR   | 1                   | PTP057TP010       | 1                  | PTP057TP010       |
|      | <b>SERVICE KIT</b> | <b>1</b>            | <b>HSS10TP1-K</b> | <b>1</b>           | <b>HSS10TP2-K</b> |

NOTE: ITEMS MARKED 'X' ARE ONLY AVAILABLE IN RESPECTIVE SERVICE KITS.

NOTE: IF SPRING IS REPLACED  
THE INSERTS SHOULD ALSO BE REPLACED

**IMPORTANT**  
WHEN ORDERING SPARES YOU MUST STATE THE FULL PART NUMBER AND THE  
PRODUCT SERIAL NUMBER - FROM THE LABEL  
TO PROTECT YOUR WARRANTY ALWAYS USE GENUINE HI-FORCE PARTS.