

ITEM NO.	PART NUMBER	DESCRIPTION	QTY.
1	CBC043SC004	CYLINDER	1
2	PRC043AC002	PISTON	1
3	SRC035WD005	STOP RING	1
4	CF1	COUPLER	1
5	PPC1	DUST COVER	1
6	SPC022SD001	SPRING	1
7	SIC013TB001	INSERT	2
8	X	SOCKET CAP HD SCREW	2
9	X	PISTON SEAL	1
10	X	WIPER	1
11	PTP057TP010	THREAD PROTECTOR	1
12	X	WASHER	2
13	HA10	SADDLE	1
14	X	O - RING	1

REVISION	
1	
2	3982
3	
4	
5	
6	
7	
8	
9	
10	
11	
12	
13	
14	
15	
16	
17	
18	
19	
20	

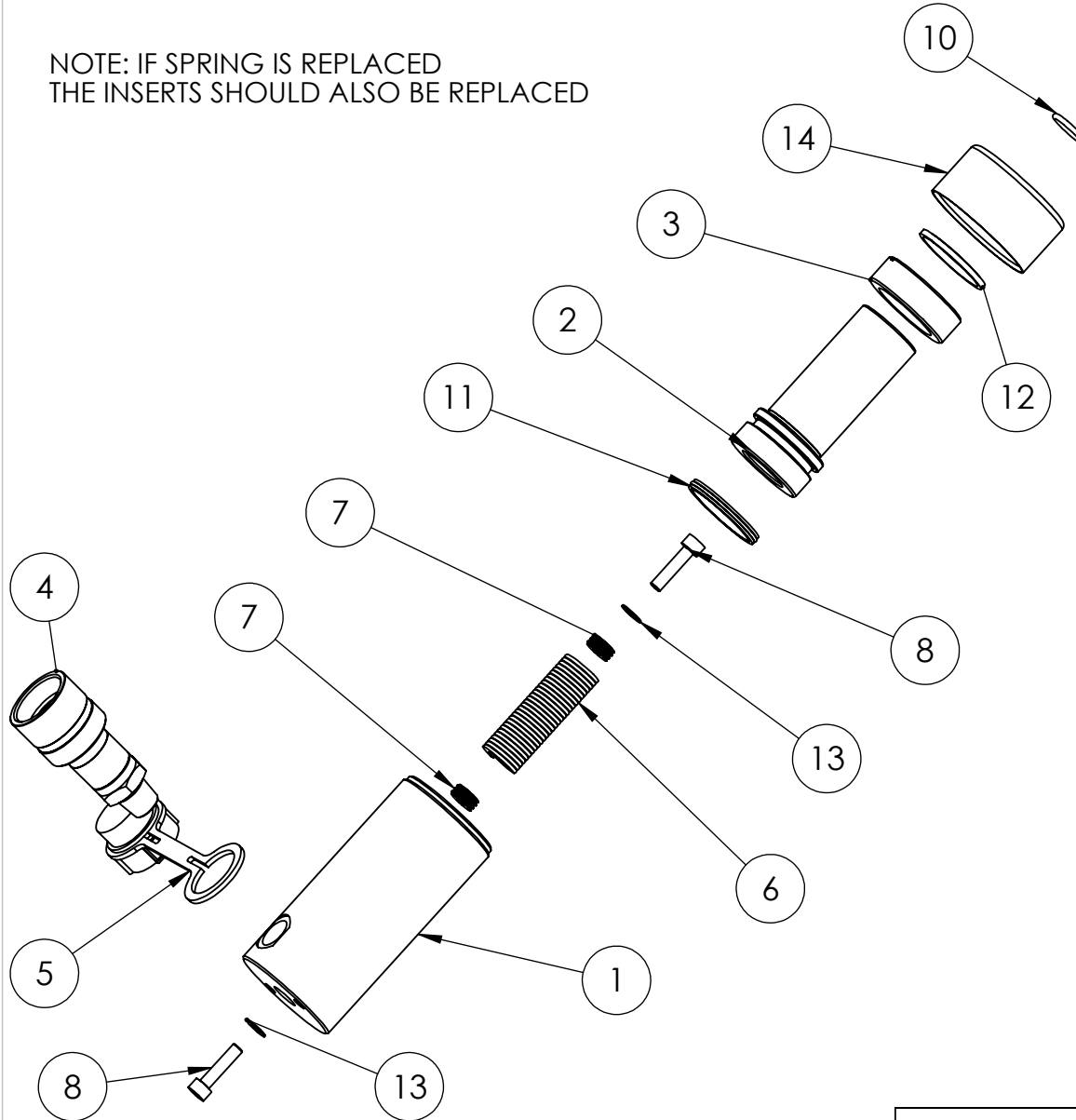
ITEMS MARKED "X"
SUPPLIED IN HSS10TP2-K ONLY

NOTE: IF SPRING IS REPLACED
THE INSERTS SHOULD ALSO BE REPLACED

IMPORTANT

WHEN ORDERING SPARES YOU MUST STATE THE FULL PART NUMBER AND THE PRODUCT SERIAL NUMBER - FROM THE LABEL TO PROTECT YOUR WARRANTY ALWAYS USE GENUINE HI-FORCE PARTS.

NOTE: IF SPRING IS REPLACED
THE INSERTS SHOULD ALSO BE REPLACED



ITEM	DESCRIPTION	UP TO SERIAL AW7592		FROM SERIAL AW7592	
		QTY	PART NUMBER	QTY	PART NUMBER
1	CYLINDER	1	CBC043SC004	1	CBC043SC004
2	PISTON	1	PRC043AC001	1	PRC043AC002
3	STOP RING	1	SRC035WD003	1	SRC035WD005
4	COUPLER	1	CF1	1	CF1
5	DUST COVER	1	PPC1	1	PPC1
6	SPRING	1	SPC022SD001	1	SPC022SD001
7	INSERT	2	SIC013TB001	2	SIC013TB001
8	SOCKET CAP HEAD SCREW	2	X	2	X
9	SADDLE	1	HA10	1	HA10
10	O-RING	1	X	1	X
11	PISTON SEAL	1	X	1	X
12	WIPER	1	X	1	X
13	WASHER	2	X	2	X
14	THREAD PROTECTOR	1	PTP057TP010	1	PTP057TP010
	SERVICE KIT	1	HSS10TP1-K	1	HSS10TP2-K

NOTE: ITEMS MARKED 'X' ARE ONLY AVAILABLE IN RESPECTIVE SERVICE KITS.

IMPORTANT
WHEN ORDERING SPARES YOU MUST STATE THE FULL PART NUMBER AND THE
PRODUCT SERIAL NUMBER - FROM THE LABEL
TO PROTECT YOUR WARRANTY ALWAYS USE GENUINE HI-FORCE PARTS.