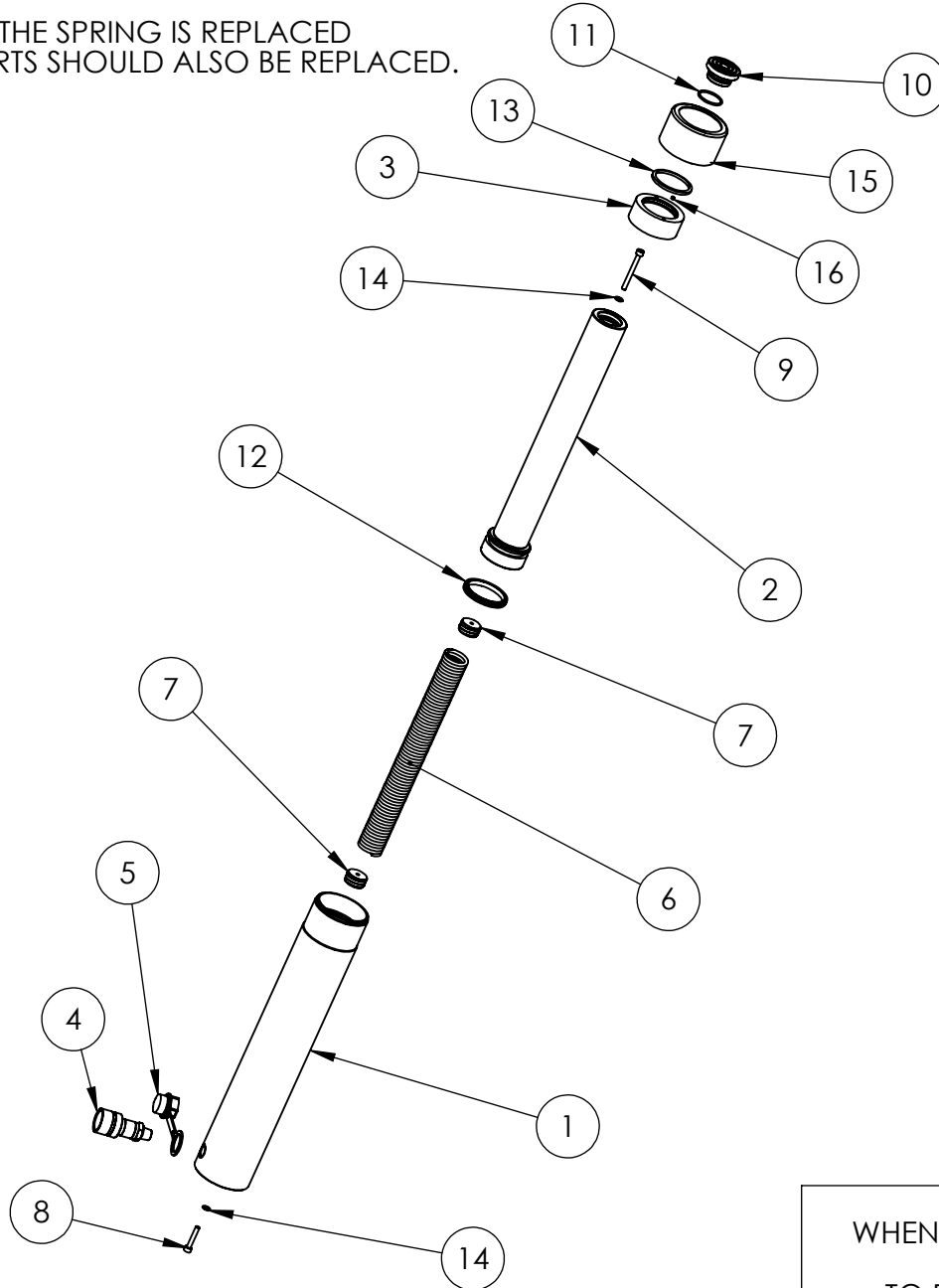


NOTE: IF THE SPRING IS REPLACED THE INSERTS SHOULD ALSO BE REPLACED.



| | DESCRIPTION | UP TO SERIAL AX0481 | | FROM SERIAL AX0481 | |
|----|-----------------------|---------------------|-------------------|--------------------|-------------------|
| | | QTY | PART NUMBER | QTY | PART NUMBER |
| 1 | CYLINDER | 1 | CBC067SP001 | 1 | CBC067SP001 |
| 2 | PISTON | 1 | PRC067AP001 | 1 | PRC067AP002 |
| 3 | STOP RING | 1 | SRC054SF001 | 1 | SRC054SF003 |
| 4 | COUPLER | 1 | CF1 | 1 | CF1 |
| 5 | DUST COVER | 1 | PPC1 | 1 | PPC1 |
| 6 | SPRING | 1 | SPC038TM002 | 1 | SPC038TM002 |
| 7 | INSERT | 2 | SIC029TC001 | 2 | SIC029TC001 |
| 8 | SOCKET CAP HEAD SCREW | 1 | BLC006JC035 | 1 | BLC006JC035 |
| 9 | SOCKET CAP HEAD SCREW | 1 | BLC006JC060 | 1 | BLC006JC060 |
| 10 | SADDLE | 1 | HA25 | 1 | HA25 |
| 11 | O - RING | 1 | X | 1 | X |
| 12 | PISTON SEAL | 1 | X | 1 | X |
| 13 | WIPER | 1 | X | 1 | X |
| 14 | WASHER | 2 | X | 2 | X |
| 15 | THREAD PROTECTOR | 1 | PTP086TP025 | 1 | PTP086TP025 |
| 16 | FILTER | / | / | 1 | FFC004RC001 |
| | SERVICE KIT | 1 | HSS25TP1-K | 1 | HSS25TP2-K |

NOTE: ITEMS MARKED 'X' ARE ONLY AVAILABLE IN RESPECTIVE SERVICE KITS.

IMPORTANT
WHEN ORDERING SPARES YOU MUST STATE THE FULL PART NUMBER AND THE PRODUCT SERIAL NUMBER - FROM THE LABEL TO PROTECT YOUR WARRANTY ALWAYS USE GENUINE HI-FORCE PARTS.