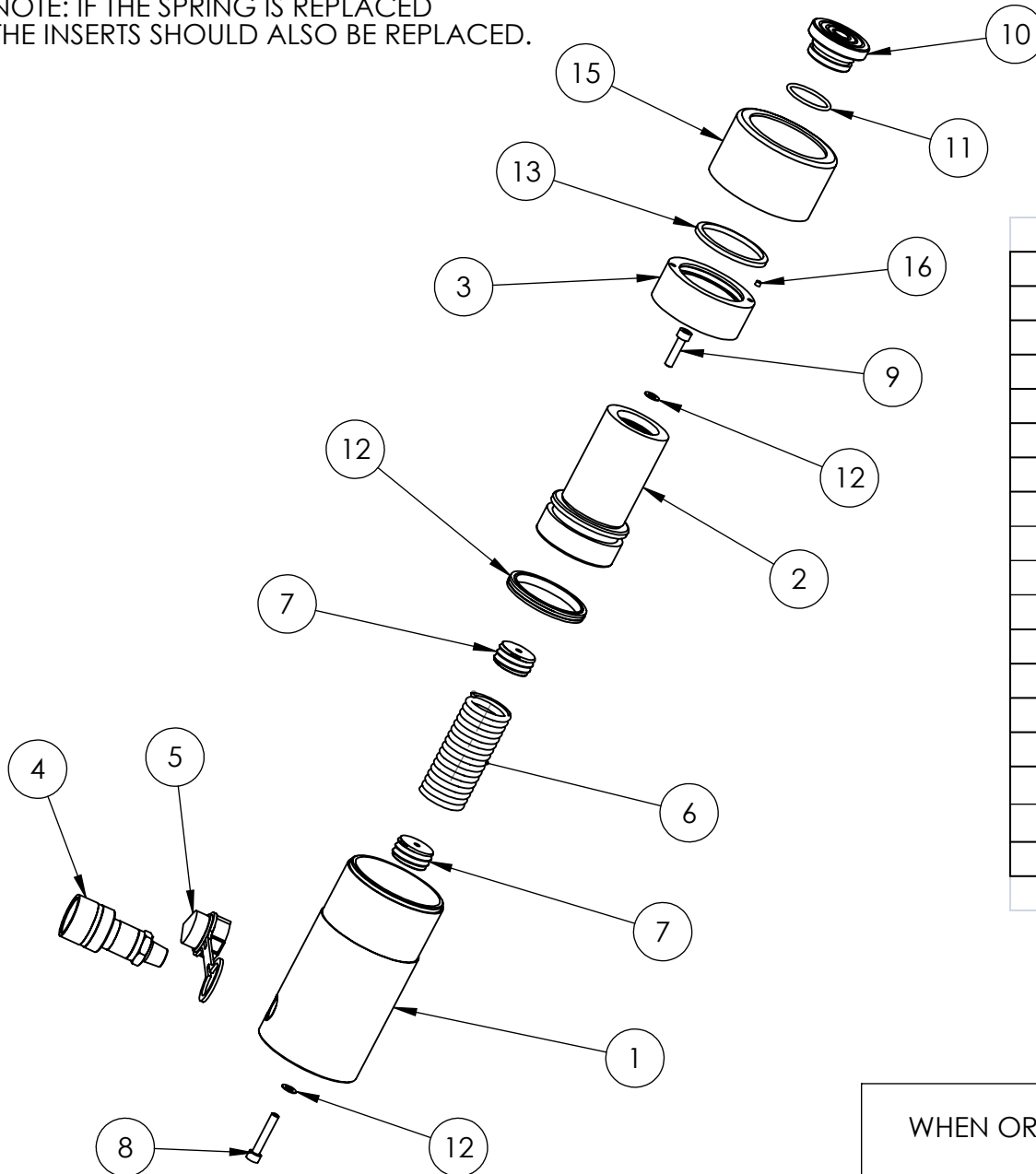


NOTE: IF THE SPRING IS REPLACED
THE INSERTS SHOULD ALSO BE REPLACED.



	DESCRIPTION	UP TO SERIAL AW7088		FROM SERIAL AW7088	
		QTY	PART NUMBER	QTY	PART NUMBER
1	CYLINDER	1	CBC067SD001	1	CBC067SD001
2	PISTON	1	PRC067AD001	1	PRC067AD002
3	STOP RING	1	SRC054SF001	1	SRC054SF003
4	COUPLER	1	CF1	1	CF1
5	DUST COVER	1	PPC1	1	PPC1
6	SPRING	1	SPC038TD002	1	SPC038TD002
7	INSERT	2	SIC029TC001	2	SIC029TC001
8	SOCKET CAP HEAD SCREW	1	BLC006JD035	1	BLC006JD035
9	SOCKET CAP HEAD SCREW	1	BLC006JD025	1	BLC006JD025
10	SADDLE	1	HA25	1	HA25
11	O-RING	1	X	1	X
12	PISTON SEAL	1	X	1	X
13	WIPER	1	X	1	X
14	WASHER	2	X	2	X
15	THREAD PROTECTOR	1	PTP086TP025	1	PTP086TP025
16	FILTER	/	/	1	FFC004RC001
	SERVICE KIT	1	HSS25TP1-K	1	HSS25TP2-K

NOTE: ITEMS MARKED 'X' ARE ONLY AVAILABLE IN RESPECTIVE SERVICE KITS.

IMPORTANT

WHEN ORDERING SPARES YOU MUST STATE THE FULL PART NUMBER AND THE
PRODUCT SERIAL NUMBER - FROM THE LABEL
TO PROTECT YOUR WARRANTY ALWAYS USE GENUINE HI-FORCE PARTS.