

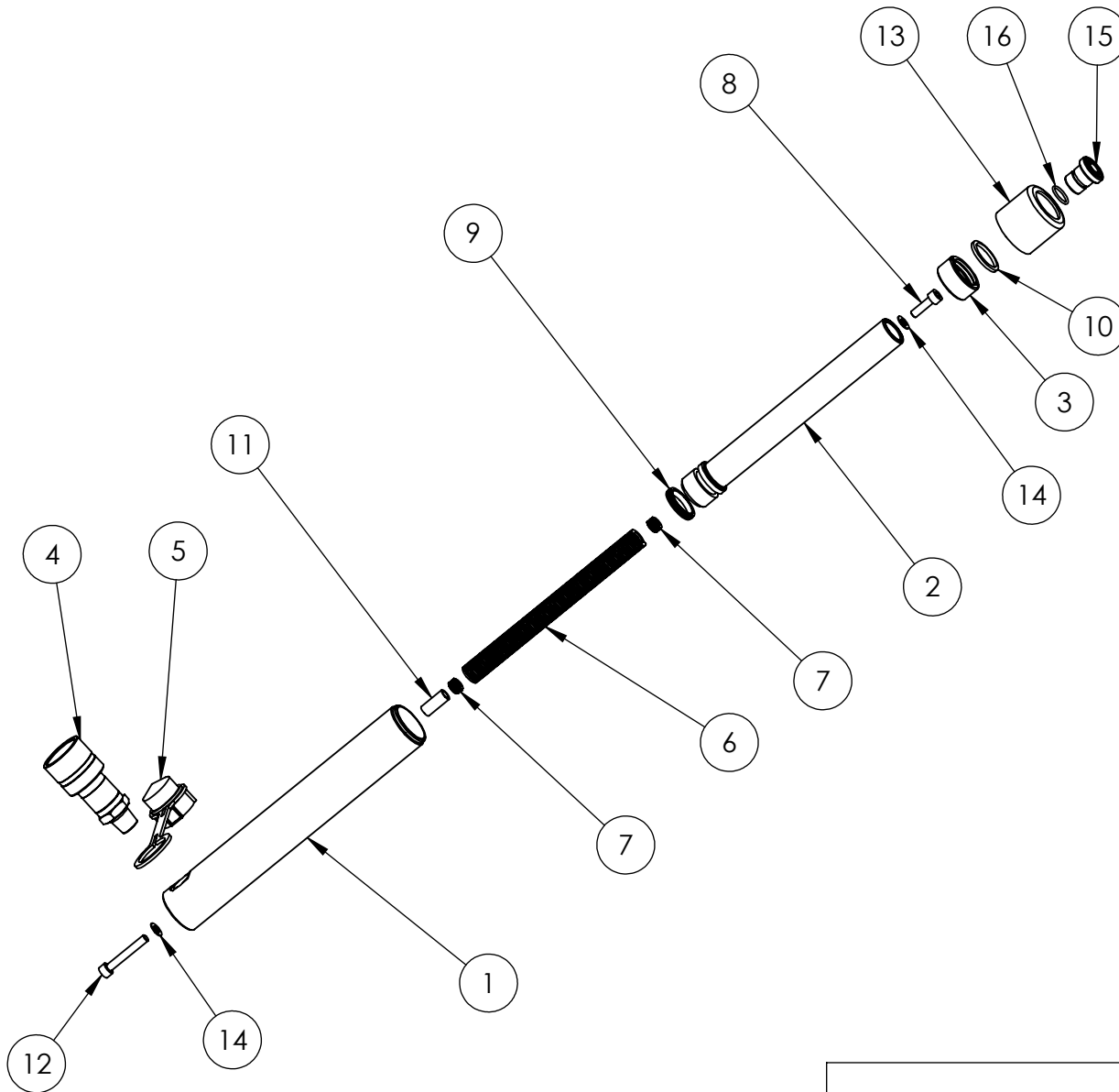
ITEM NO.	PART NUMBER	DESCRIPTION	QTY.	SPARE PARTS	SERVICE PARTS	REVISION
1	CBC029SJ001	CYLINDER	1			1
2	PRC029AJ001	PISTON	1			2 3928
3	SRC024SC001	STOP RING	1			3 6288
4	CF1	COUPLER	1			4
5	PPC1	DUST COVER	1			5
6	SPC017SH001	SPRING	1			6
7	SIC011TB003	INSERT	2			7
8	BLC006JD020	M6 x 20 mm HEX SOCKET CAP HEAD SCREW	1			8
9	SEC029GA001	PISTON SEAL	1		✓	9
10	SEC024XE001	WIPER	1		✓	10
11	SFC010TA001	SPACER	1			11
12	BLC006JC045	M6 x 45 mm HEX SOCKET CAP HEAD SCREW	1			12
13	PTP038TP005	THREAD PROTECTOR	1			13
14	WAC006EB000	M6 WASHER	2		✓	14
15	HA5	SADDLE	1			15
16	SEC017RF001	O-RING	1		✓	16

NOTE:

- ALL PARTS AVAILABLE TO BE ORDERED AS SPARE PARTS (UNLESS MARKED WITH **x**).
- ONLY PARTS MARKED WITH **✓** ARE AVAILABLE AS BOTH SPARE PARTS OR SERVICEABLE PARTS FROM HSS5TP1-K.
- IF SPRING (SPC017SH001) IS REPLACED THE SPRING INSERTS (SIC011TB003) SHOULD ALSO BE REPLACED.

IMPORTANT

WHEN ORDERING SPARES YOU MUST STATE THE FULL PART NUMBER AND THE PRODUCT SERIAL NUMBER - FROM THE LABEL TO PROTECT YOUR WARRANTY ALWAYS USE GENUINE HI-FORCE PARTS.



ITEM NO.	PART NUMBER	DESCRIPTION	QTY
1	CBC029SJ001	CYLINDER	1
2	PRC029AJ001	PISTON	1
3	SRC024SC001	STOP RING	1
4	CF1	COUPLER	1
5	PPC1	DUST COVER	1
6	SPC017SH001	SPRING	1
7	SIC011TB003	INSERT	2
8	BLC006JD040	SOCKET CAP HD SCREW	1
9	X	PISTON SEAL	1
10	X	WIPER	1
11	SFC010TA001	SPACER	1
12	BLC006JD040	SOCKET CAP HD SCREW	1
13	PTP038TP005	THREAD PROTECTOR	1
14	X	WASHER	2
15	HA5	SADDLE	1
16	X	O - RING	1

ITEMS MARKED "X"
SUPPLIED IN HSS57P1-K ONLY

NOTE: IF SPRING IS REPLACED
THE INSERTS SHOULD ALSO BE REPLACED

IMPORTANT

WHEN ORDERING SPARES YOU MUST STATE THE FULL PART NUMBER AND THE PRODUCT SERIAL NUMBER - FROM THE LABEL TO PROTECT YOUR WARRANTY ALWAYS USE GENUINE HI-FORCE PARTS.