

ITP & MTP - BOLT & NUT PROTECTION CAPS

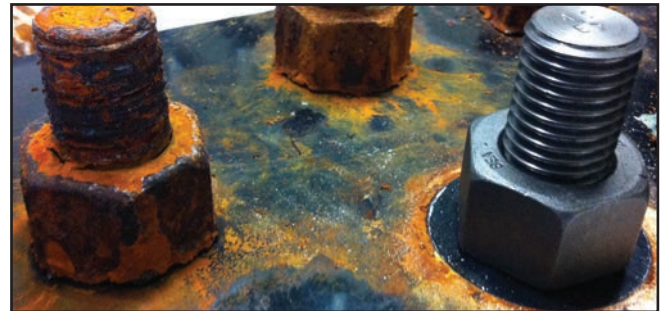
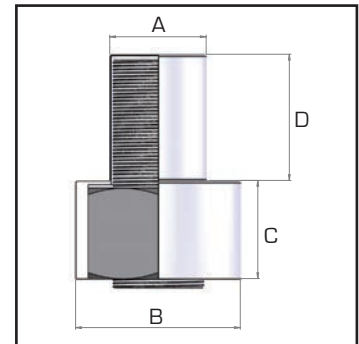


Protects exposed bolt threads and nuts

Sizes from 3/4" to 4" (M16 to M100)

Strong and secure fixing

The ITP & MTP bolt and nut protection caps are designed to protect bolts and nuts from thread damage and to considerably help prevent corrosion. These screw-on metal caps have a special internal female thread matching the bolt thread, that ensures a strong and secure fixing to the bolt. These protection caps are commonly installed on heat exchangers and reactors operating at temperatures up to 550 °C and over, where common plastic caps would melt. Ideal for use in refineries, petrochemical, LNG plants, offshore platforms and steel structures. The ITP caps are available to suit imperial bolt thread sizes from 3/4" to 4" and MTP caps are suitable for metric bolt thread sizes from M16 to M100.



G

Model number	Imperial Sizes				
	Bolt size	Dimensions in mm			
		A	B	C	D
ITP012	3/4"	19.0	39	22	23
ITP014	7/8"	22.3	44	26	33
ITP100	1"	25.5	48	29	37
ITP102	1 1/8"	28.6	55	33	40
ITP104	1 1/4"	31.8	60	36	44
ITP106	1 3/8"	35.0	65	39	48
ITP108	1 1/2"	38.2	70	42	53
ITP110	1 5/8"	41.3	77	46	59
ITP112	1 3/4"	44.5	83	49	64
ITP114	1 7/8"	47.7	88	53	67
ITP200	2"	51.0	94	56	72
ITP204	2 1/4"	57.2	105	62	80
ITP208	2 1/2"	63.5	114	69	91
ITP212	2 3/4"	70.0	125	75	99
ITP300	3"	76.3	136	81	107
ITP304	3 1/4"	82.7	152	87	116
ITP308	3 1/2"	89.0	160	94	126
ITP312	3 3/4"	95.4	172	100	135
ITP400	4"	102.0	183	107	152

Model number	Metric Sizes				
	Bolt size	Dimensions in mm			
		A	B	C	D
MTP16	M16	16	31	18	22
MTP18	M18	18	34	21	23
MTP20	M20	20	39	23	25
MTP22	M22	22	40	25	32
MTP24	M24	24	45	29	34
MTP27	M27	27	51	30	37
MTP30	M30	30	55	33	40
MTP33	M33	33	61	36	46
MTP36	M36	36	65	39	48
MTP39	M39	39	70	42	52
MTP42	M42	42	77	46	59
MTP45	M45	45	83	49	64
MTP48	M48	48	88	53	67
MTP52	M52	52	94	56	72
MTP56	M56	56	102	60	84
MTP64	M64	64	113	69	91
MTP68	M68	68	119	73	98
MTP72	M72	72	125	77	100
MTP76	M76	76	131	81	105
MTP80	M80	80	136	85	107
MTP90	M90	90	159	95	126
MTP100	M100	100	183	105	144



Standard material : plated steel
Optional material : aluminium & stainless steel