

REVISION	
1	
2	4731
3	
4	
5	
6	
7	
8	
9	
10	
11	
12	
13	
14	
15	
16	
17	
18	
19	
20	

IMPORTANT

WHEN ORDERING SPARES YOU MUST STATE THE FULL PART NUMBER AND THE PRODUCT SERIAL NUMBER - FROM THE LABEL TO PROTECT YOUR WARRANTY ALWAYS USE GENUINE HI-FORCE PARTS

DRWG REF NO.	PART NO.	PART NAME	QTY.
1	X	O-RING	1
2	X	SCREW	1
3	X	PIN	1
4	X	PIN	1
5	X	THROTTLE VALVE	1
6	X	THROTTLE SPRING	1
7	X	O-RING	1
8	IW25B-53	REGULATOR VALVE	1
9	X	O-RING	1
10	X	O-RING	1
11	IW38B-09	PLUG	1
12	IW25B-04	REGULATOR KNOB	1
13	X	PIN	1
14	X	STEEL BALL	1
15	X	KNOCK SPRING	1
16	IW38B-14	REVERSE VALVE	1
17	X	O-RING	1
18	X	RETAINER	1
19	IW25B-16	REVERSE LEVER	1
20	X	SCREW	1
21	X	BOLT	4
22	X	MOTOR HOUSING GASKET	1
23	X	REAR BEARING	1
24	IW38B-22	REAR END PLATE	1
25	X	SPRING PIN	3
26	IW38B-23	CYLINDER	1
27	IW38B-25	ROTOR	1
28	X	ROTOR BLADE	6
29	IW38B-27	FRONT END PLATE	1

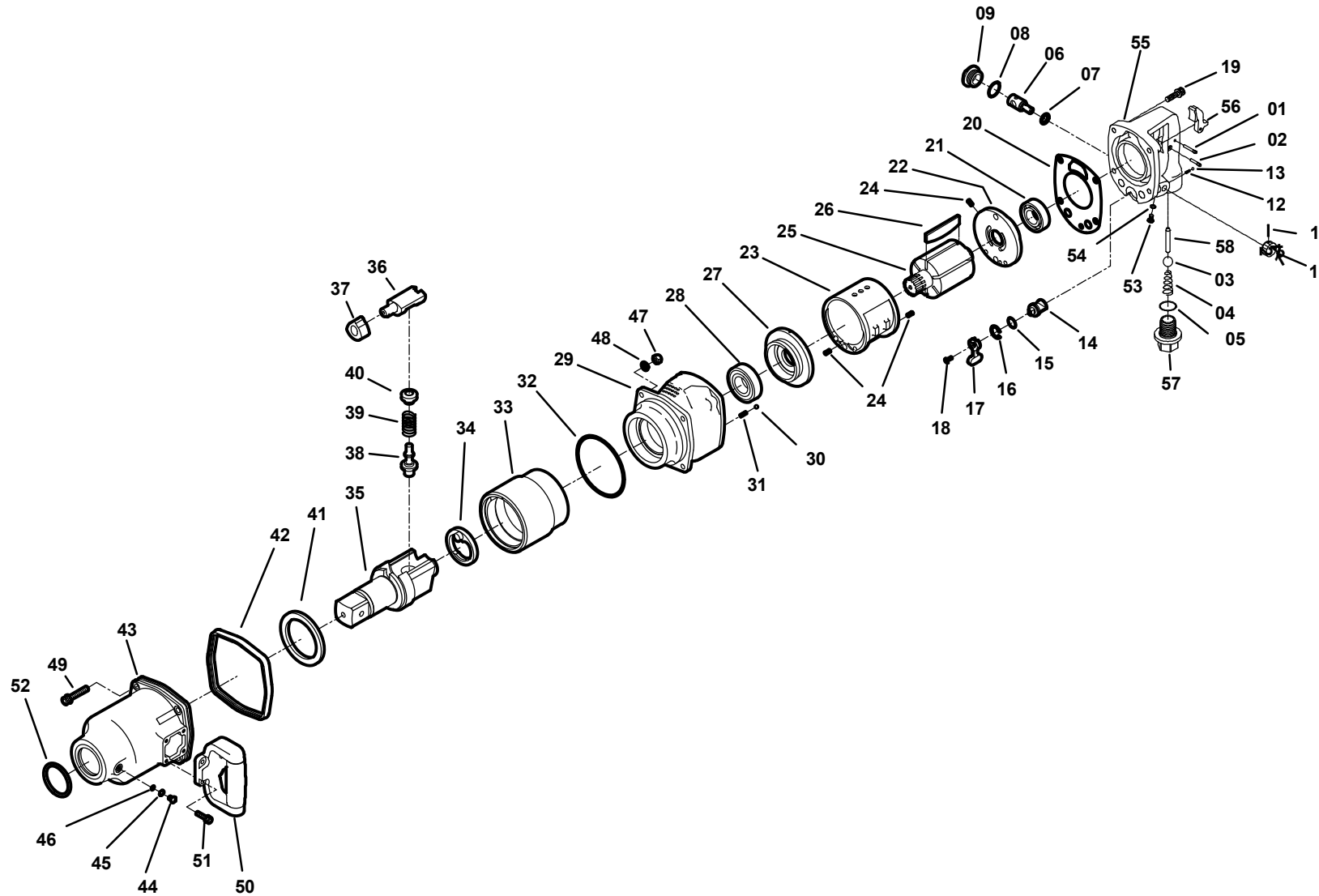
DRWG REF NO.	PART NO.	PART NAME	QTY.
30	X	BALL BEARING	1
31	IW38B-31	MOTOR HOUSING	1
32	X	O-RING	1
33	IW38B-33	HAMMER WHEEL	1
34	IW38B-34	RETAINER	1
35	IW38B-35	1-1/2"SQ.DR.ANVIL	1
36	IW38B-36	ANVIL PIECE	1
37	IW38B-37	CAM	1
38	IW38B-38	PLUNGER A	1
39	X	SPRING	1
40	IW38B-40	PLUNGER B	1
41	IW38B-41	BUSHING	1
42	X	REAR RUBBER PROTECTOR	1
43	IW38B-43	IMPACT HOUSING CP	1
44	X	LOCK NUT	4
45	X	WASHER	4
46	X	BOLT	4
47	IW25B-41	DEAD HANDLE C.P.	1
48	X	BOLT	4
49	IW25B-57	THROTTLE LEVER	1
50	IW38B-50	HANDLE C.P. (PT)	1
51	X	THROTTLE VALVE PIN	1
52	IW38B-52	INLET BUSHING (PT)	1
53	X	BOLT	4

REVISION	
1	
2	4731
3	
4	
5	
6	
7	
8	
9	
10	
11	
12	
13	
14	
15	
16	
17	
18	
19	
20	

NOTE: ITEMS MARKED "X" SUPPLIED IN KIT IW38BTP2-K ONLY.

IMPORTANT

WHEN ORDERING SPARES YOU MUST STATE THE FULL PART NUMBER AND THE PRODUCT SERIAL NUMBER - FROM THE LABEL TO PROTECT YOUR WARRANTY ALWAYS USE GENUINE HI-FORCE PARTS



ITEM NO.	PART NO.	DESCRIPTION	QTY
01	X	Pin	1
02	X	Pin	1
03	X	Throttle Valve	1
04	X	Throttle Spring	1
05	X	O-Ring	1
06	IW25B-53	Regulator Valve	1
07	X	O-Ring	1
08	X	O-Ring	1
09	IW38B-09	Plug	1
10	IW25B-04	Regulator Knob	1
11	X	Pin	1
12	X	Knock Spring	1
13	X	Steel Ball	1
14	IW38B-14	Reverse Valve	1
15	X	O-Ring	1
16	X	Retainer	1
17	IW25B-16	Reverse Lever	1
18	X	Screw	1
19	X	Bolt	4
20	X	Motor Housing Gasket	1
21	X	Rear Bearing	1
22	IW38B-22	Rear End Plate	1
23	IW38B-23	Cylinder	1
24	X	Spring Pin	3
25	IW38B-25	Rotor	1
26	X	Rotor Blade	6
27	IW38B-27	Front End Plate	1
28	X	Ball Bearing	1
29	IW38B-29	Motor Case C.P.(Front Exhaust)	1
30	X	Steel Ball	1
31	X	Knock Spring	1
32	X	O-Ring	1
33	IW38B-33	Hammer Wheel	1
34	IW38B-34	Retainer	1
35	IW38B-35	G-Anvil	1
36	IW38B-36	Anvil Piece	1
37	IW38B-37	Cam	1
38	IW38B-38	Plunger A	1
39	X	Spring	1
40	IW38B-40	Plunger B	1
41	IW38B-41	Bushing	1
42	X	Rear Rubber Protector	1
43	IW38B-43	Impact Housing Cp	1
44	X	Grease Screw	1
45	X	Toothed Lock Washer	1
46	X	O-Ring	1
47	X	Lock Nut	4
48	X	Washer	4
49	X	Bolt	4
50	IW25B-41	Dead Handle C.P.	1
51	X	Bolt	4
52	X	O-Ring	1
53	X	Screw	1
54	X	O-Ring	1
55	IW38B-55	Handle C.P.(Pt)	1
56	IW25B-57	Throttle Lever	1
57	IW25B-59	Inlet Bushing(Pt)	1
58	X	Throttle Lever	1

NOTE: ITEMS MARKED "X" SUPPLIED IN KIT IW38BTP1-K ONLY

IMPORTANT

WHEN ORDERING SPARES YOU MUST STATE THE FULL PART NUMBER AND THE PRODUCT SERIAL NUMBER - FROM THE LABEL
TO PROTECT YOUR WARRANTY ALWAYS USE GENUINE HI-FORCE PARTS