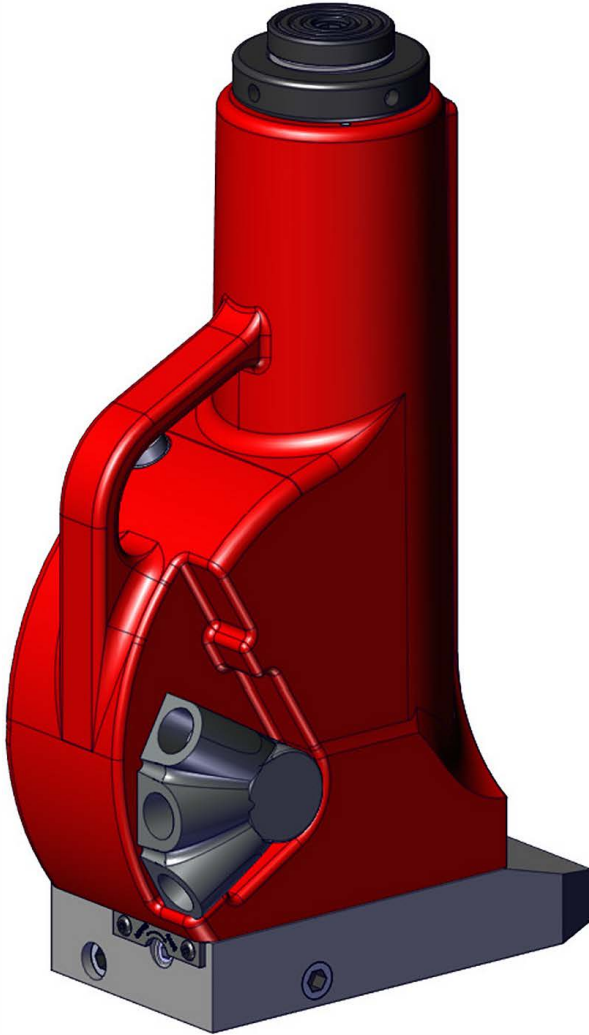


Revision	1	5498	2	3
	4		5	6



BOM ID	Part number	Description	Qty
1	X	RAM CAP SCREW	1
2	X	SCRAPER	1
3	X	CISTERN O-RING	1
4	JHC060CB002	1220 CISTERN	1
5	X	QUADRANT O-RING	1
6	JHC000QZ001	QUADRANT SHAFT	1
7	X	ROCKER SCREW	1
8	JHC000JZ001	JACK TUMBLER	1
9	SEC076DE001	GAITER SEAL	2
10	JHC000TZ001	TUMBLER ROLLER	1
11	STC012AA001	CIRCLIP	2
12	X	DIP STICK ORING	1
13	JHA000DA001	DIP STICK	1
14	X	WIPER RETAINING CLIP	1
15	JHC060AB001	RAM CAP	1
16	JHC060LB004	1220 LINER	1
17	X	BASE O-RING	1
18	STC013BA001	RETAINING CLIP	1
19	FFC012MA001	SUCTION FILTER	1
20	JHC060BB001	620/1220 EXTENDED BASE	1
21	FAS010MA020	CUP PT SCREW	1
22	X	DELIVERY SCREW	1
23	SPC009PA001	DELIVERY SPRING	1
24	X	BASE SCREWS	6
25	VRA700AF002	RELIEF VALVE	1
26	JHC000KZ001	PUMP BARREL	1
27	X	PUMP BARREL WASHER	1
28	SPC012CA001	RELEASE VALVE SPRING	1
29	SEC013RA001	RELEASE VALVE ORING	1
30	X	BASE DOWTY WASHER	1
31	X	BASE PLUG SCREW	1
32	X	8mm BALL	3
33	SPC009PA001	SUCTION SPRING	1
34	X	DOWTY WASHER	2
35	X	SUCTION SCREW	1
36	X	BUTTON HEAD PLATE SCREW	2
37	JHC000GZ001	RELEASE PLATE	1
38	FAS016OC019	RELEASE VALVE SCREW	1
39	JAC010JC002	RELEASE VALVE SPINDLE	1
40	X	PUMP PLUNGER O-RING	1
41	X	PUMP PLUNGER BACK UP	1
42	JHC000UZ002	PUMP PLUNGER CIRCLIP	1
43	JHC000UZ001	PUMP PLUNGER	1
44	X	20 TONNE GASKET	1
45	JHC000WB002	SAFE STOP RING	2
46	SPC003CA001	COMPRESSION SPRING	2
47	X	SPRING PIN	2
48	X	RAM DOWTY WASHER	1
49	X	RAM PLUG SCREW	1
50	X	RAM SEAL BACKUP 20 TONNE	1
51	JHC060RB004	1220 SR RAM	1
52	JHC000WB001	SAFE STOP BAR	1
53	PCC003FC002	Dowel pin hardened & ground	1
54	X	6mm BALL	1
55	SPC006CA007	RELIEF VALVE SPRING	1
56	JHC000VZ001	SAFE STOP VALVE BODY	1
57	X	RAM SEAL 20 TONNE	1
58	JHC060SB001	STOP RING	1

ITEMS MARKED X ARE AVAILABLE  
IN SERVICE KIT JAH20TP2-K ONLY

IMPORTANT  
WHEN ORDERING SPARES YOU MUST STATE THE FULL PART NUMBER AND THE  
PRODUCT SERIAL NUMBER - FROM THE LABEL  
TO PROTECT YOUR WARRANTY ALWAYS USE GENUINE HI-FORCE PARTS.

Revision

1	5498	2		3	
4		5		6	