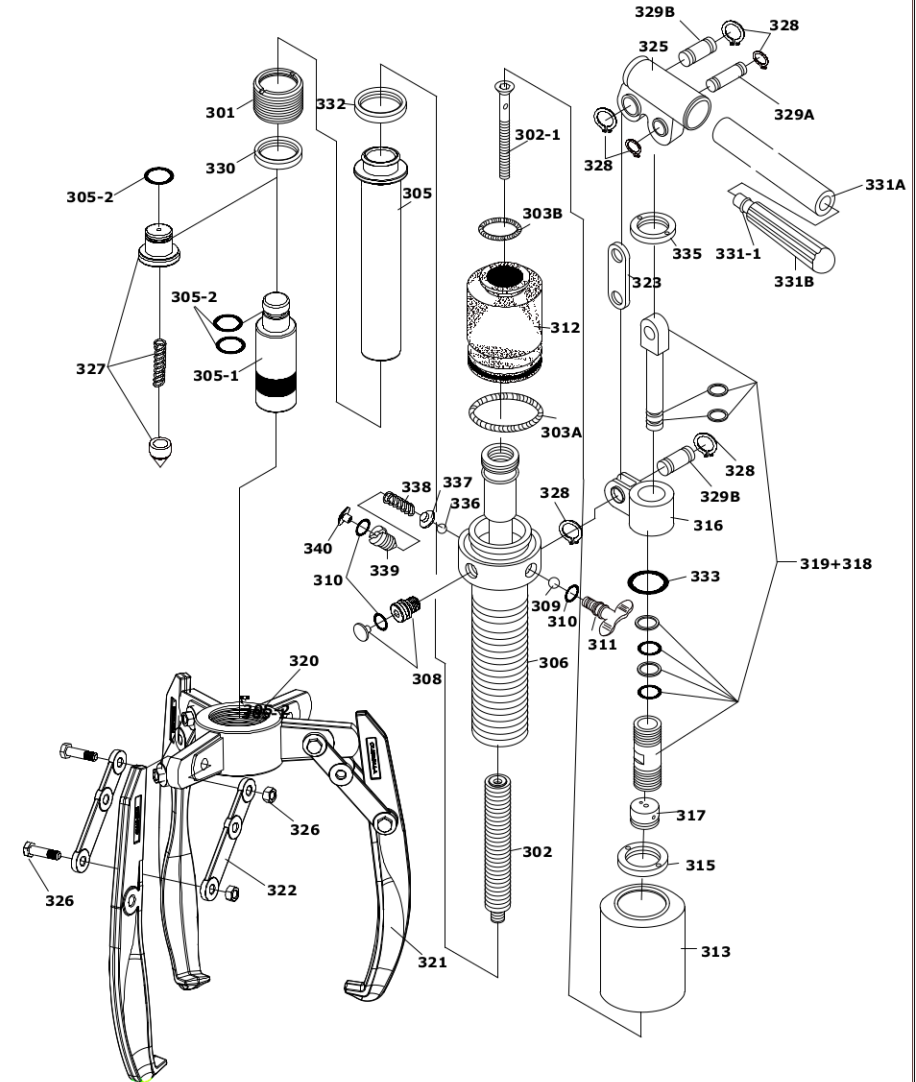


SELF-CONTAINED HYDRAULIC PULLERS. SCP

SERIAL NUMBERS
ALL

SPARE PARTS LIST NO.
SCPP1

ITEM NO.	DESCRIPTION	SCP103		SCP203		SCP303	
		PART NO.	QTY	PART NO.	QTY	PART NO.	QTY
301	Cylinder Retaining Nut	SCP103-301	1	SCP203-301	1	SCP303-301	1
302	Compression Spring	SCP103-302	1	SCP203-302	1	SCP303-302	1
302-1	Pull Screw	A		A		A	1
303A	Retaining Ring	X	1	X	1	X	1
303B	Retaining Ring	X	1	X	1	X	1
305	Rod	SCP103-305	1	SCP203-305	1	SCP303-305	1
305-1	Piston Foot	SCP103-305-1	1	SCP203-305-1	1	SCP303-305-1	1
305-2	O-ring	X	2	X	3	X	3
306	Hydraulic Cylinder	NOT AVAILABLE	1	NOT AVAILABLE	1	NOT AVAILABLE	1
308	Oil Filler	X	1	X	1	X	1
309	Ball	X	1	X	1	X	1
310	O-ring	X	3	X	3	X	3
311	Release Valve	X	1	X	1	X	1
312	Bladder	X	1	X	1	X	1
313	Cylinder	SCP103-313	1	SCP203-313	1	SCP303-313	1
315	Stop Ring	SCP103-315	1	SCP203-315	1	SCP303-315	1
316	Clamp	SCP103-316	1	SCP103-316	1	SCP103-316	1
317	Valve	SCP103-317	1	SCP103-317	1	SCP103-317	1
318 + 319	Piston Assembly	SCP103-318-319	1	SCP103-318-319	1	SCP103-318-319	1
320	Jaw	SCP103-320	1	SCP203-320	1	SCP303-320	1
321	Leg	SCP103-321	3	SCP203-321	3	SCP303-321	3
322	Strap	SCP103-322	6	SCP203-322	6	SCP303-322	6
323	Linkage	SCP103-323	1	SCP103-323	1	SCP103-323	1
325	Rocker	SCP103-325	1	SCP103-325	1	SCP103-325	1
326	Nut and Bolt	X	6	X	6	X	6
327	Saddle	SCP103-327	1	SCP203-327	1	SCP303-327	1
328	Circlip	X	6	X	6	X	6
329A	Pivot Pin	X	1	X	1	X	1
329B	Pivot pin	X	2	X	2	X	2
330	Ring	SCP103-330	1	SCP203-330	1	SCP303-330	1
331-1	O-ring	X	1	X	1	X	1
331A	Handle Beam	SCP103-331A	1	SCP103-331A	1	SCP103-331A	1
331B	Handle	SCP103-331B	1	SCP103-331B	1	SCP103-331B	1
332	Ring	SCP103-332	1	SCP203-332	1	SCP303-332	1
333	Disc	SCP103-333	1	SCP103-333	1	SCP103-333	1
335	Stop Ring	SCP103-335	1	SCP103-335	1	SCP103-335	1
336	Ball (Safety Valve Assy)	B	1	B	1	B	1
337	Seat (Safety Valve Assy)	B	1	B	1	B	1
338	Spring (Safety Valve Assy)	B	1	B	1	B	1
339	Screw (Safety Valve Assy)	B	1	B	1	B	1
340	Handle (Safety Valve Assy)	B	1	B	1	B	1
	Repair Kit	SCP103TP1-K	1	SCP203TP1-K	1	SCP303TP1-K	1



IMPORTANT
WHEN ORDERING SPARES YOU MUST STATE THE FULL PART NUMBER AND THE PRODUCT SERIAL NUMBER - FROM THE LABEL
TO PROTECT YOUR WARRANTY ALWAYS USE GENUINE HI-FORCE PARTS